

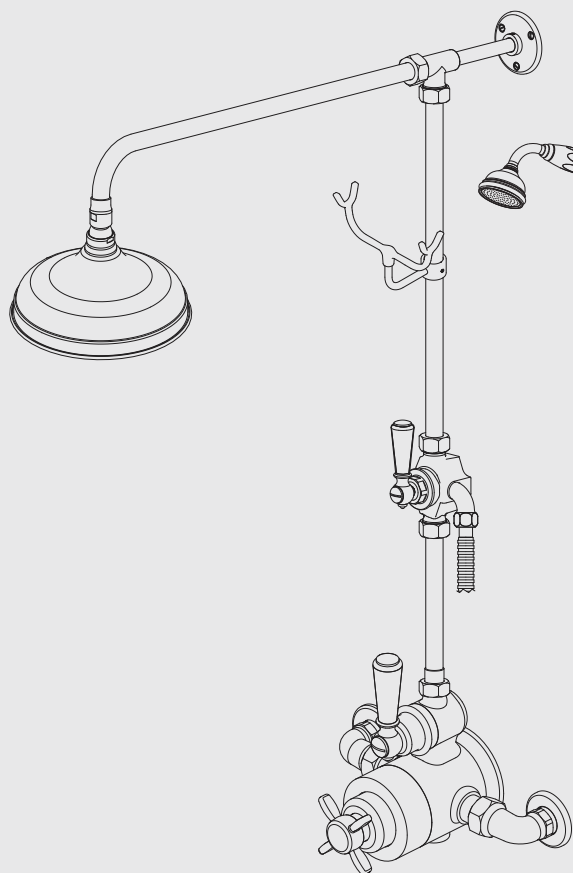
INSTALLATION INSTRUCTIONS

GD 8704

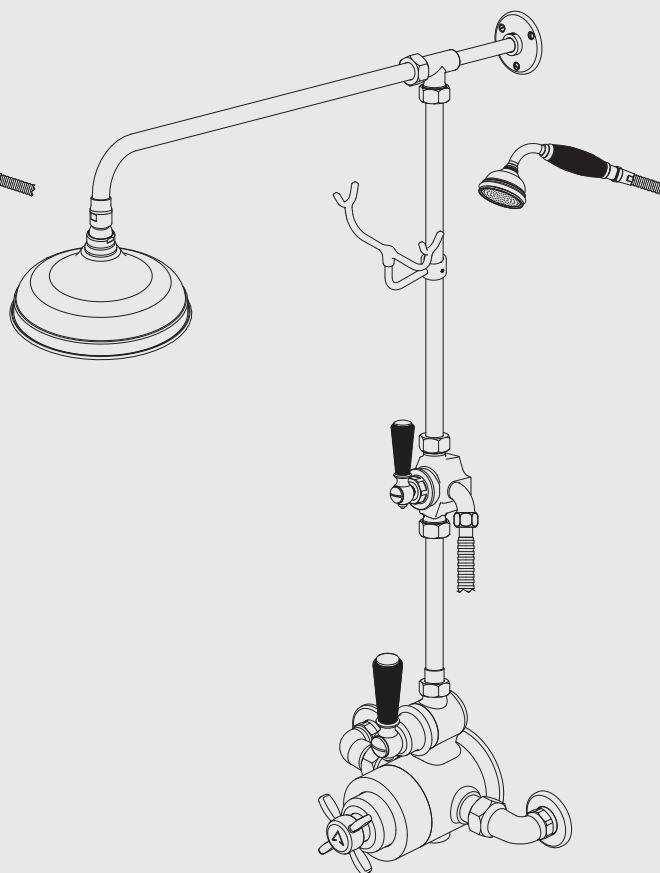
EXPOSED WHITE LEVER THERMOSTATIC MIXING VALVE WITH RISER KIT, HANDSET, LEVER DIVERTER, 8" ROSE AND ADJUSTABLE RISER PIPE BRACKET.

BL 8704

EXPOSED BLACK LEVER THERMOSTATIC MIXING VALVE WITH RISER KIT, HANDSET, LEVER DIVERTER, 8" ROSE AND ADJUSTABLE RISER PIPE BRACKET.



GD 8704

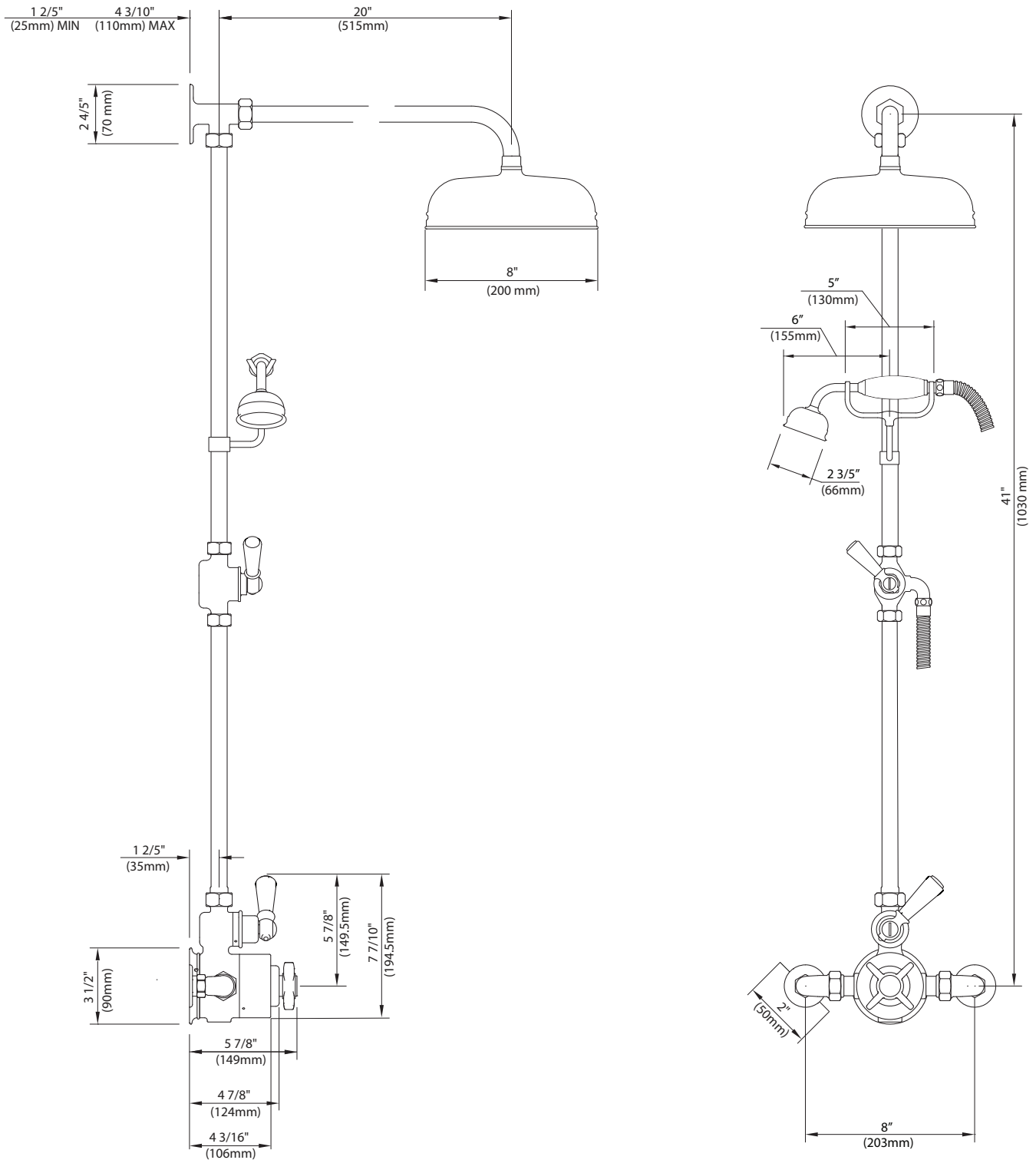


BL 8704

LEFROY BROOKS

Dimensions in Inches (& Millimetres)

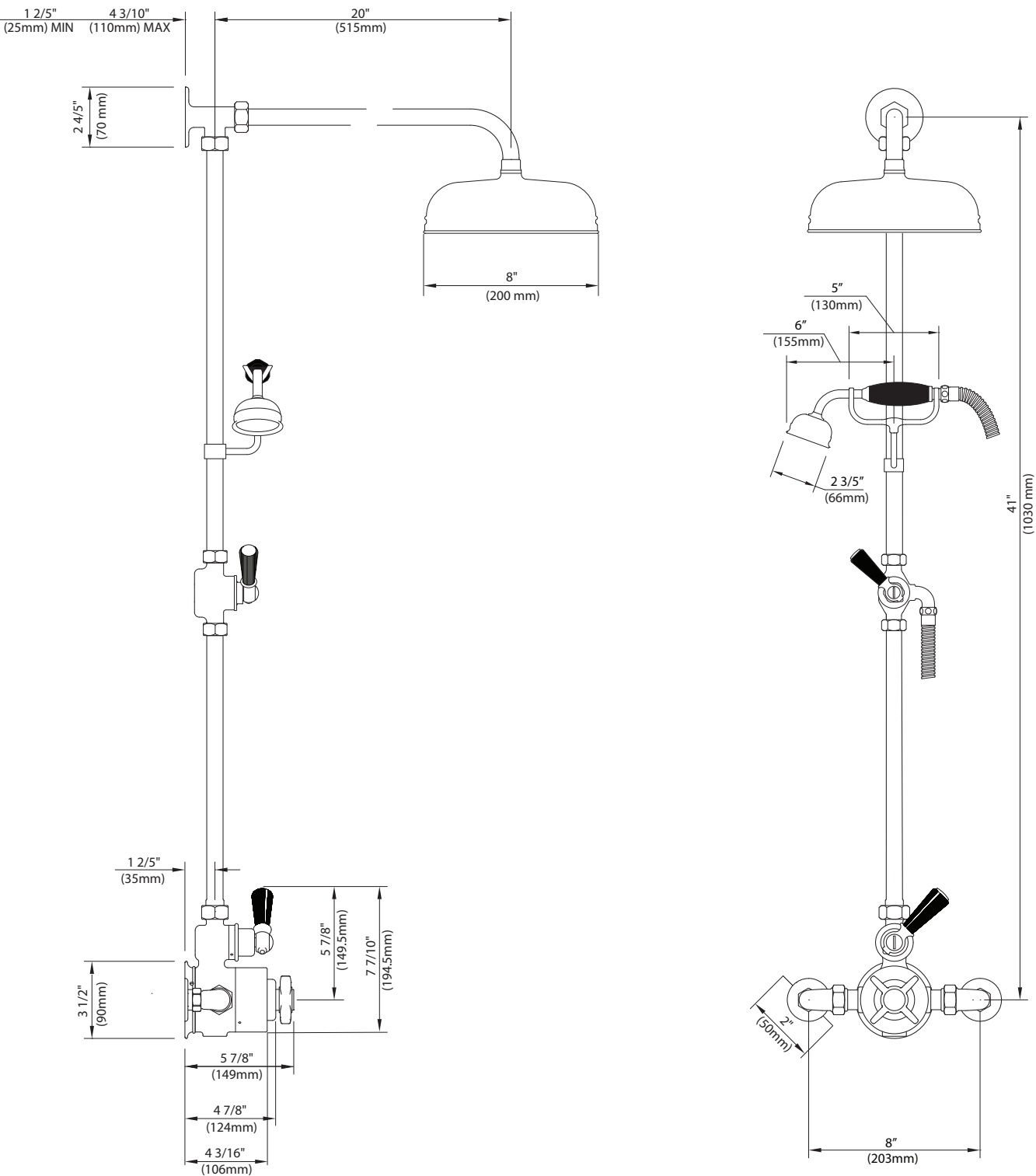
GD 8704



Whilst every effort is made to ensure accuracy, design and dimensions are subject to change without notice as part of the company's product development process.

Dimensions in Inches (& Millimetres)

BL 8704

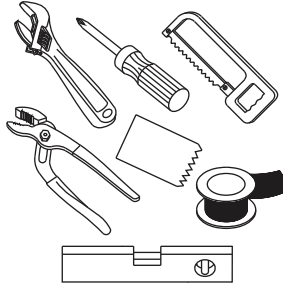


Whilst every effort is made to ensure accuracy, design and dimensions are subject to change without notice as part of the company's product development process.

What you need to know

Tools:

Adjustable Wrench
Groove Joint Pliers
Hacksaw
Phillips Screwdriver
Spirit Level



Maintenance

Your new bathroom faucet is designed for years of trouble-free performance.

Keep it looking new by cleaning it periodically with a soft cloth. Avoid abrasive cleaners, wire wool and harsh chemicals as these will dull the finish and void your warranty.

Safety Tips

If you are soldering during faucet installation, remove cartridges, seats, gaskets and washers prior to applying flame, otherwise you will void the warranty.

Cover drain openings to avoid losing small parts.

When cutting or soldering pipe, use safety glasses to protect your eyes.

Important Points

Prior to beginning installation, turn off the cold and hot water lines and open the old faucet to release built-up pressure.

Overtightening nuts may cause damage.

Wrap all threaded connections with pipe tape available at your local plumbing supply store. Always wrap in a clockwise direction. The fittings should be installed by a state-licensed plumber.

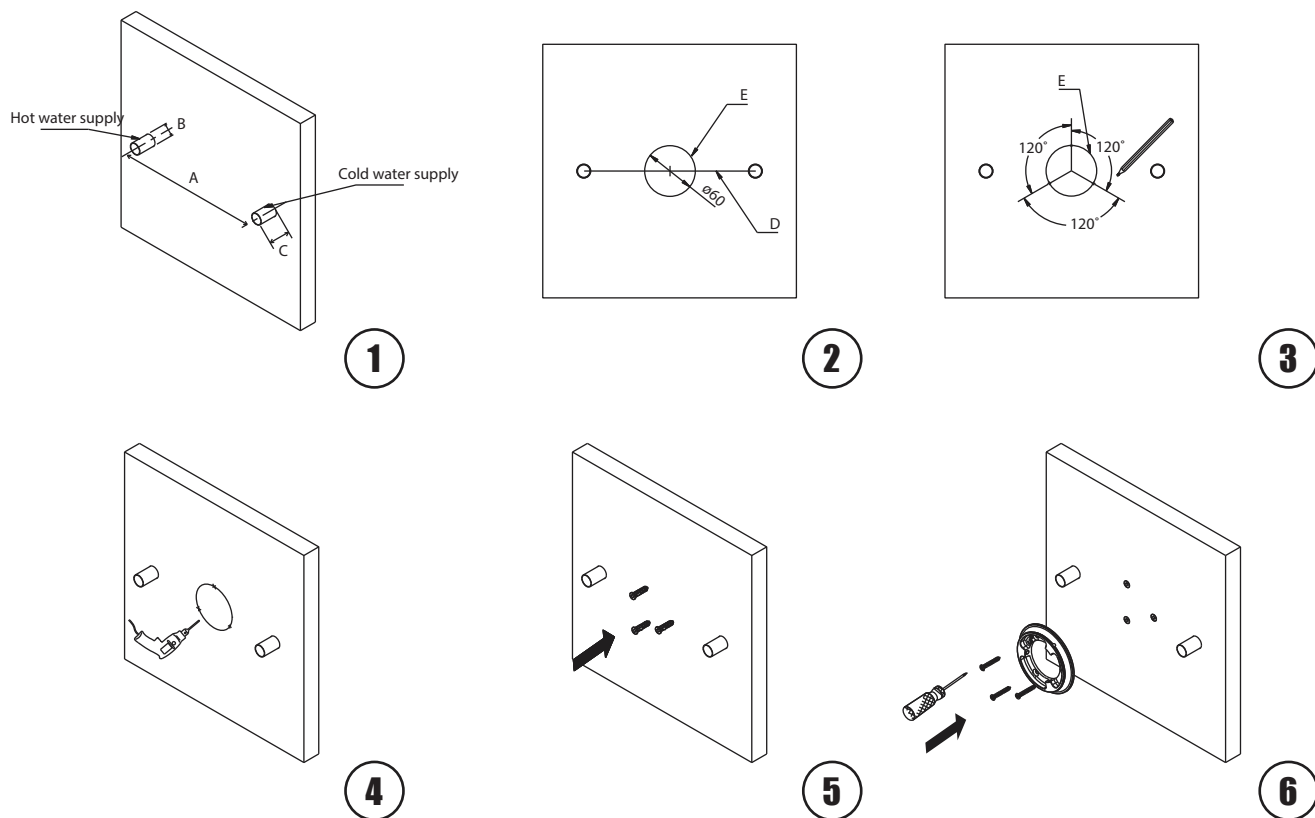
Things You May Need

Correct installation may vary depending on previous faucet installation. All necessary supplies required for faucet installation are not included, but may be found where plumbing supplies are sold. It is suggested that IAPMO and/or CSA approved plumbing supplies are used during installation.

Steps 1-6

Installation Procedure

Lefroy Brooks always recommends that plumbing products be installed by a licensed professional. Shut off main water supply before installation.



1

Before installing the valve, make sure the following three dimensions related to the nipples protruding out of the wall surface are as shown.

A (distance between the centers of two nipples) : 8" (203mm)

B (diameter of the nipples) : 5/8" (15.98mm)

C (length of the nipples) : 3/6" ~ 4/5" (15~20mm)

2

Use a ruler to connect the centers of the two nipples and create a line D. Find the center of this line and use dividers to create a circle E with a diameter of 2 9/25" (60mm).

3

Divide the circle E into three parts equally, and mark them on the circle as shown.

4

Drill holes where you have already marked, in the previous step, for the wall plugs.

5

Fix the wall plugs into the wall.

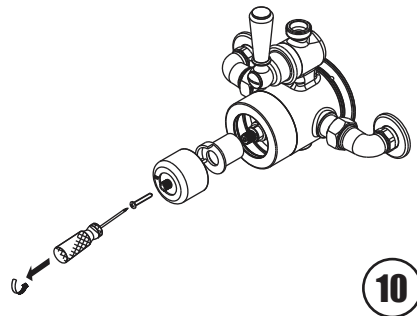
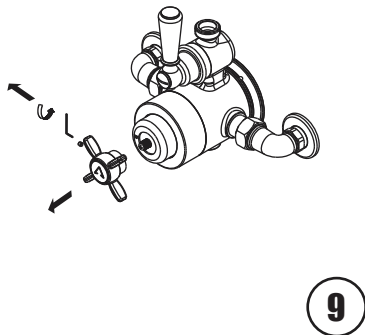
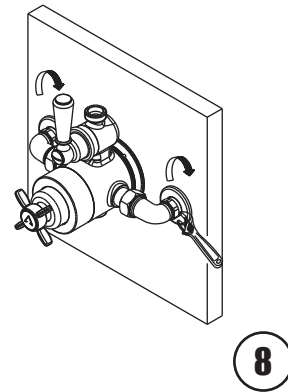
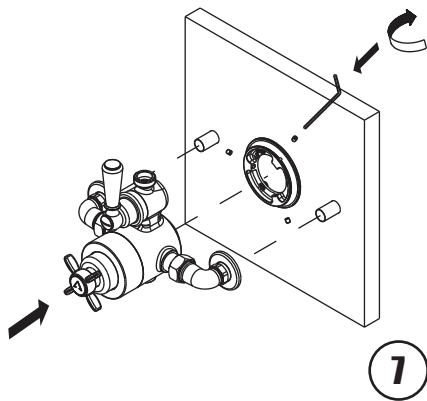
6

Attach the wall bracket to wall and fix it with screws.

Steps 7-10

Installation Procedure

Lefroy Brooks always recommends that plumbing products be installed by a licensed professional. Shut off main water supply before installation.



7 Attach the valve inlets onto the protruding nipples and place the body onto the wall bracket. Fix the body to the wall bracket with set screws.

8 Fix the nuts tightly to ensure sealing.

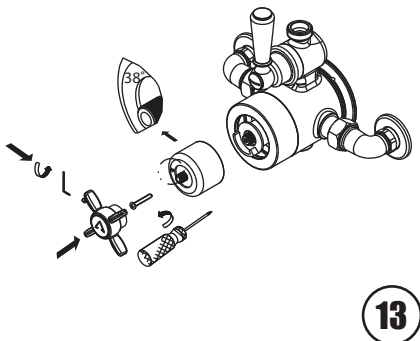
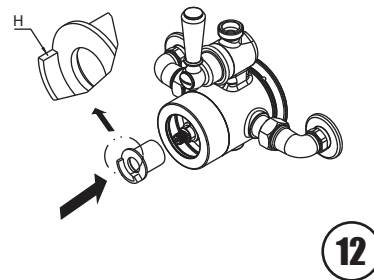
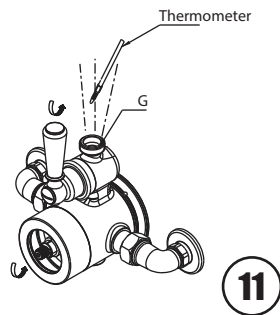
9 Unscrew the set screw and take off the handle.

10 Undo the screw and take off the adaptor and stopper.

Steps 11-13

Installation Procedure

Lefroy Brooks always recommends that plumbing products be installed by a licensed professional. Shut off main water supply before installation.



- 11** Turn on the flow controller. Turn the thermostatic cartridge until you get the water temperature at 38°. Suggestion: attach a hose to outlet G and guide the water to a drain or other container while you get the temperature right and to prevent any spillage on the floor.

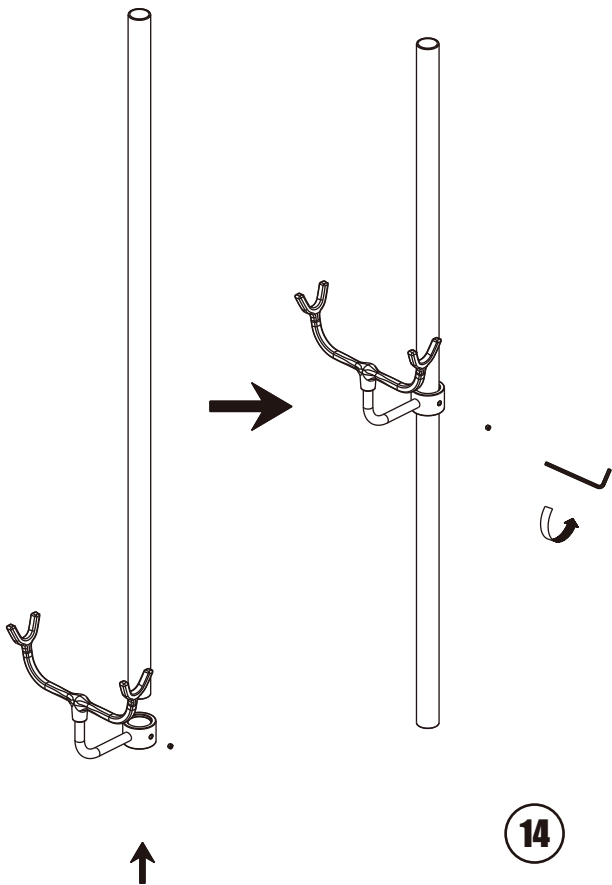
- 12** Turn off the water supply. Install the stopper and make sure its "H" plane as the figure mentioned is horizontal and on the left side.

- 13** Attach the adaptor and handle onto the valve. When the adaptor is fixed, the temperature-limit-button (38°) is at horizontal position.

Steps 14-15

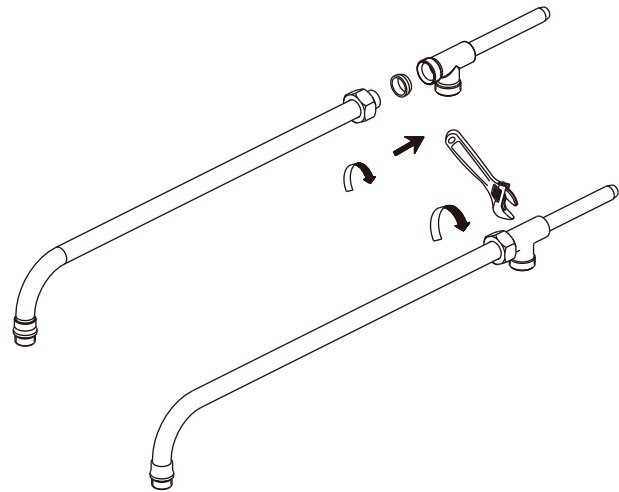
Installation Procedure

Lefroy Brooks always recommends that plumbing products be installed by a licensed professional. Shut off main water supply before installation.



14

- 14** Fix riser kit with shower cradle of choice (model shown is for example only) by fixing the set screw.



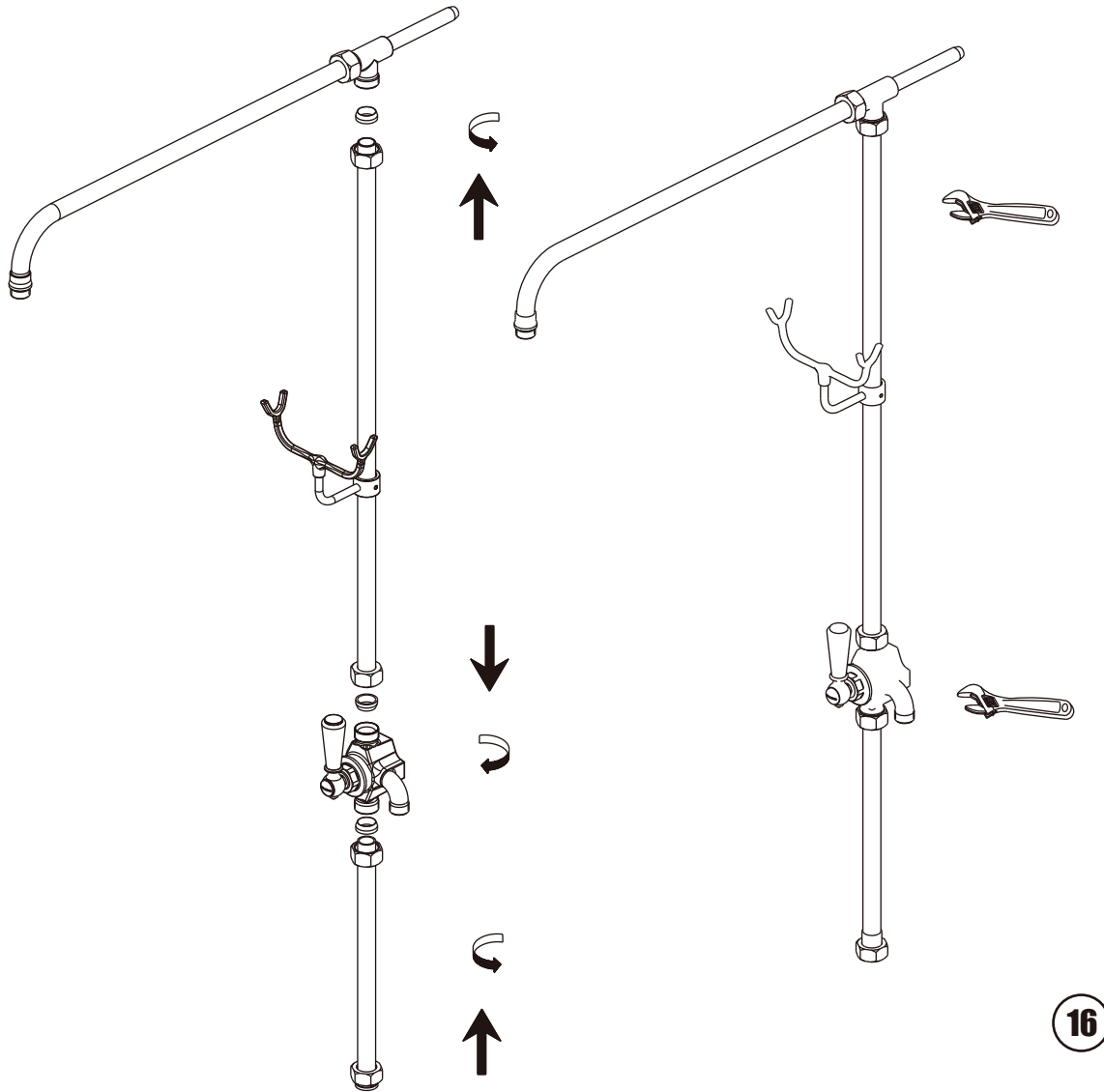
15

- 15** Assemble connecting tube with riser bracket. Put the compression olive into the riser bracket and then fix the shower arm with the riser bracket. Tighten the nut by wrench in order to fix the shower arm with the bracket.

Step 16

Installation Procedure

Lefroy Brooks always recommends that plumbing products be installed by a licensed professional. Shut off main water supply before installation.

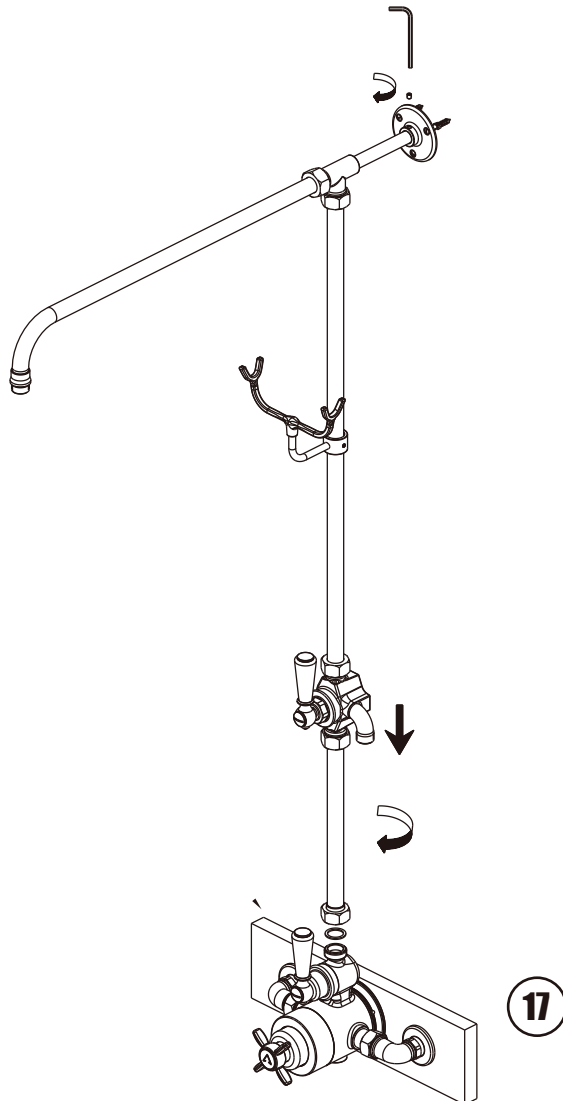


- 16** Put the compression olive into the riser bracket and then fix the riser with the bracket. Put the compression olive into the diverter body and then fix the riser with the diverter body. Tighten the nut by wrench in order to fix the riser with the bracket and with the diverter body.

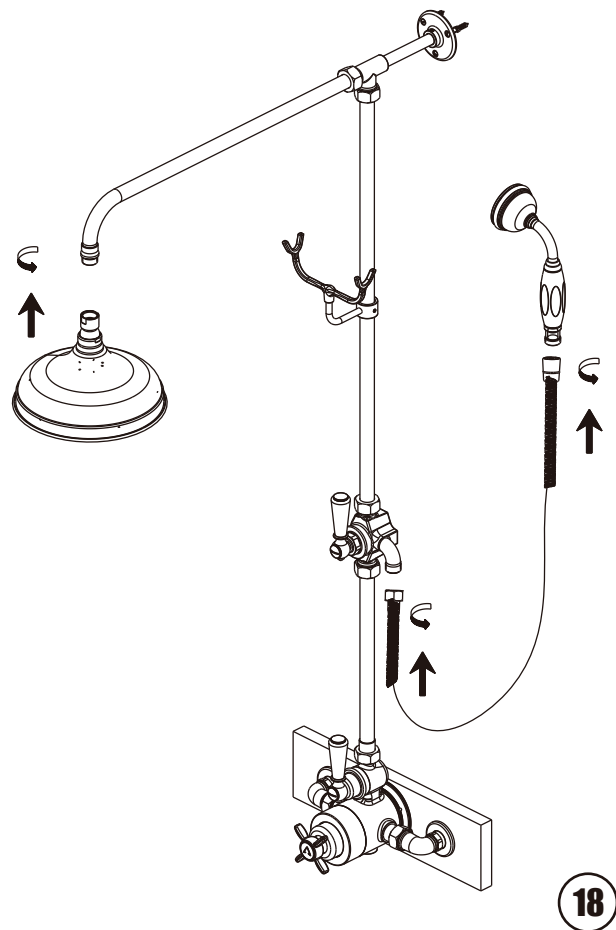
Steps 17-18

Installation Procedure

Lefroy Brooks always recommends that plumbing products be installed by a licensed professional. Shut off main water supply before installation.



- 17** Fix riser kit to the faucet of choice (model shown is for example only). Then fix the riser kit with the Wall bracket by fixing the set screw. Finally fix the wall bracket to wall where is appropriate by anchors and screws.



- 18** Connect the shower head of choice (model shown is for example only) with shower arm. Connect the flexible hose with hand shower of choice (model shown is for example only) with diverter body.

For additional assistance or service call

718-302-5292

9am to 5pm EST Monday to Friday



L E F R O Y B R O O K S

www.lefroybrooks.com

LEFROY BROOKS INC, 1828 TROUTMAN STREET, RIDGEWOOD, NY 11385
TELEPHONE: 718-302-5292. FAX: 718-302-4177

The use of trademarks, product design and artwork is subject to license or agreement with Christo A. Lefroy Brooks. The design registrations, trademark registrations and copyrights are protected by law and the use or reproduction outside the terms of an agreement is prohibited. The right to modify designs and dimensions is reserved. Christo Lefroy Brooks is a member of ACID (Anit Coping in Design)

©CHRISTO A. LEFROY BROOKS 2009