



# LEFROY BROOKS

1 8 2 8 T R O U T M A N S T R E E T  
R I D G E W O O D N E W Y O R K N Y 1 1 3 8 5 U S A  
T: +1(718) 302 5292 F: +1(718) 302 4177

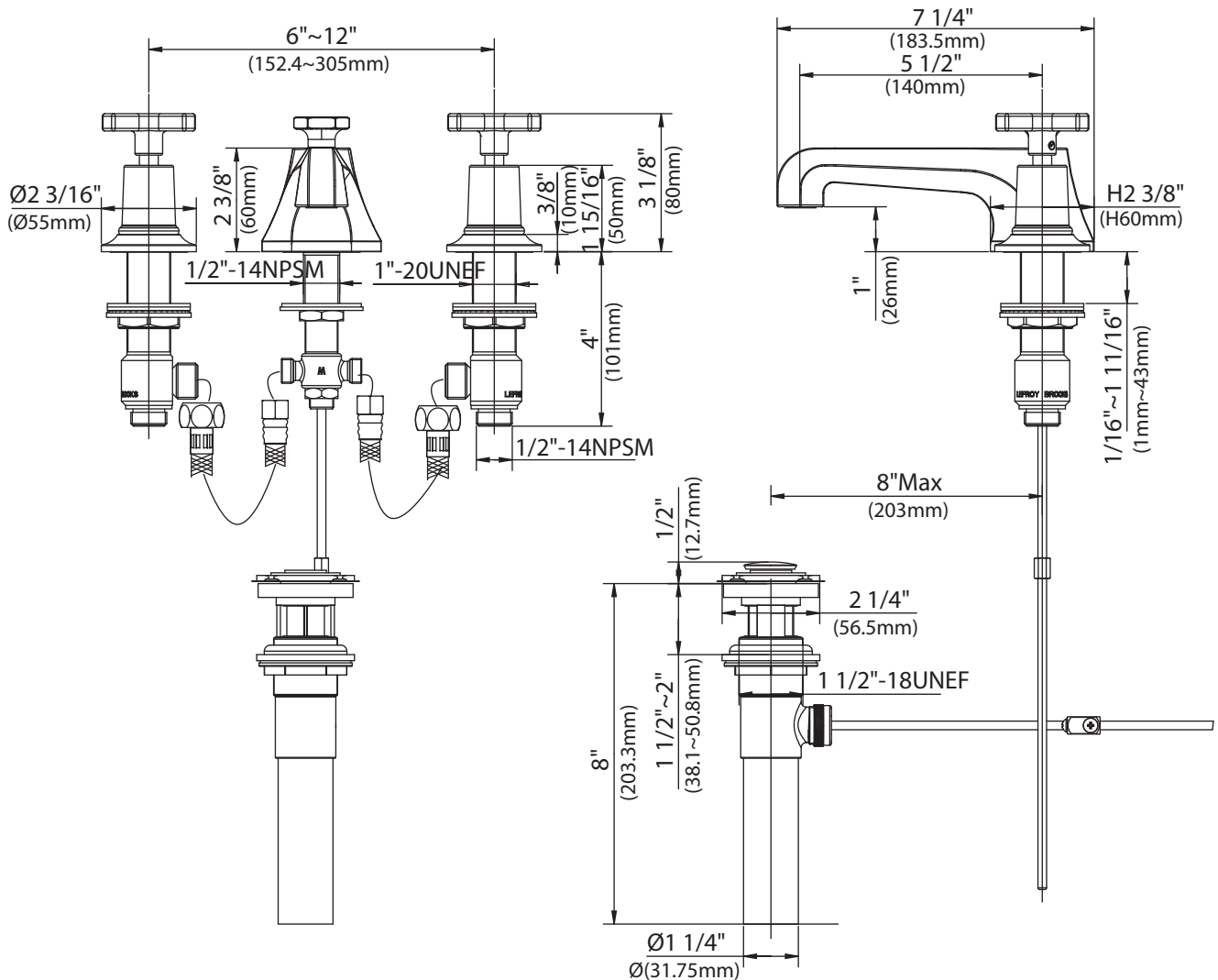
## M1-1100 (MH 1228)

CROSS HANDLE 3-HOLE BASIN MIXER WITH P.U.W.

### DIMENSIONAL DATA SHEET

DATE: 16 August 2010

No: FW2BC102



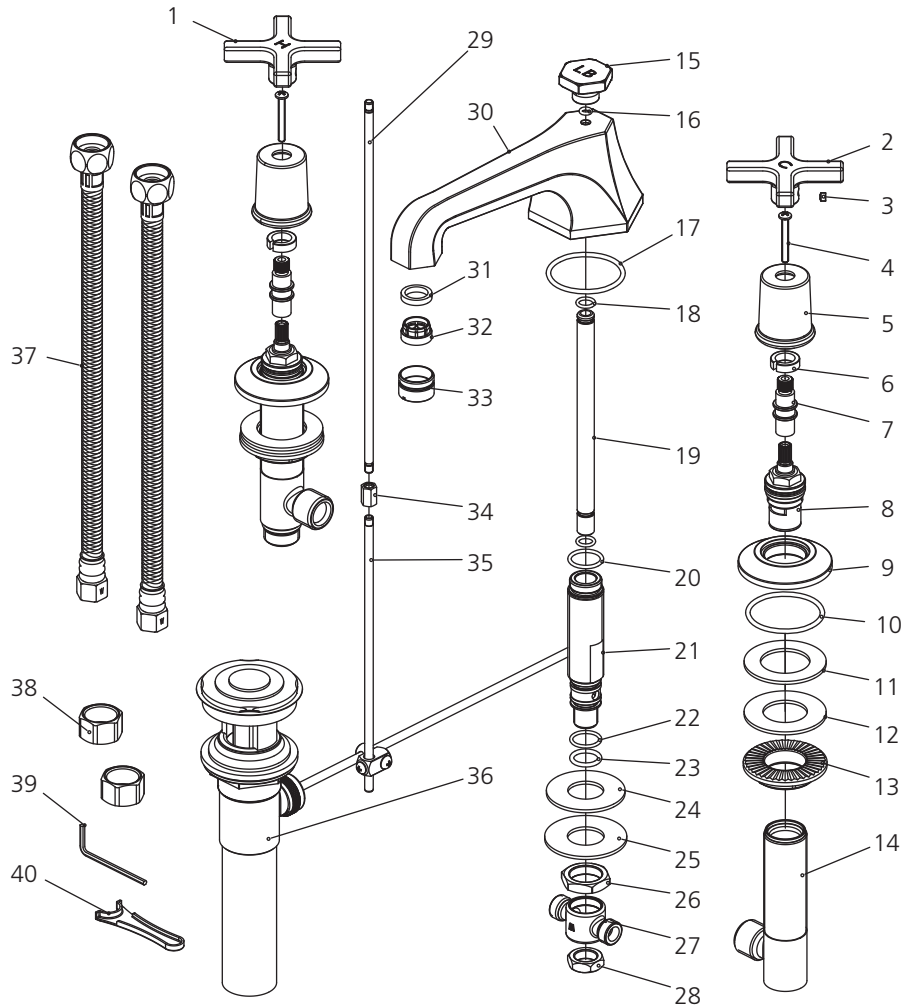
©COPYRIGHT 2009, CHRISTO LEFROY BROOKS. ALL RIGHTS RESERVED.

DIMENSIONS IN INCHES & MILLIMETRES

WHILST EVERY EFFORT IS MADE TO ENSURE THE ACCURACY OF THESE DATA SHEETS THEY ARE SUBJECT TO CHANGE WITHOUT NOTICE AS PART OF THE COMPANY'S PRODUCT DEVELOPMENT PROCESS

# M1-1100 (MH 1228)

CROSS HANDLE 3-HOLE BASIN MIXER WITH P.U.W.

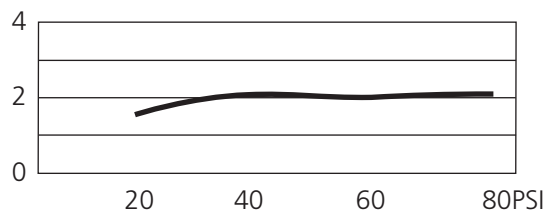


- |    |                         |    |                           |    |                           |
|----|-------------------------|----|---------------------------|----|---------------------------|
| 1  | Handle ( H ) (029685H)  | 15 | Pop-up knob (124386)      | 29 | Pop-up rod (125412)       |
| 2  | Handle ( C ) (029685C)  | 16 | O-ring (048027N)          | 30 | Spout (002252W)           |
| 3  | Set screw (292598)      | 17 | O-ring (004072N)          | 31 | Oil-seal (010095N)        |
| 4  | Screw (008972)          | 18 | O-ring (004001N)          | 32 | Aerator insert (553601N)  |
| 5  | Canopy (018040)         | 19 | Brass tube (043412N)      | 33 | Aerator housing (033071N) |
| 6  | Clip (012242)           | 20 | O-ring (004043N)          | 34 | Connector (077125)        |
| 7  | Extension stem (110409) | 21 | Connection tube (014016W) | 35 | Pop-up rod (110041)       |
| 8  | Cartridge (507907N)     | 22 | O-ring (004115N)          | 36 | Pop-up waste (556781)     |
| 9  | Escutcheon (071473)     | 23 | O-ring (004005N)          | 37 | Flexible hose (105750W)   |
| 10 | O-ring (004617)         | 24 | Spacer (060041)           | 38 | Pipework nuts (504003)    |
| 11 | Oil-seal (010017)       | 25 | Washer (013202)           | 39 | Allen key (031000)        |
| 12 | Washer (013158)         | 26 | Nut (009009)              | 40 | Spanner (031025)          |
| 13 | Nut (009834)            | 27 | Connector (015001W)       |    |                           |
| 14 | Body (061893W)          | 28 | Nut (009002)              |    |                           |

## Standards

IAPMO/cUPC Listed  
Meets NSF 61-9  
Meets A112.18.1

## Flow Rate



Please note :

Final achievable flow rate is dependent on the outlets fitted, see relevant outlets (spouts, roses, sprays) for fully assembled product flow rate.