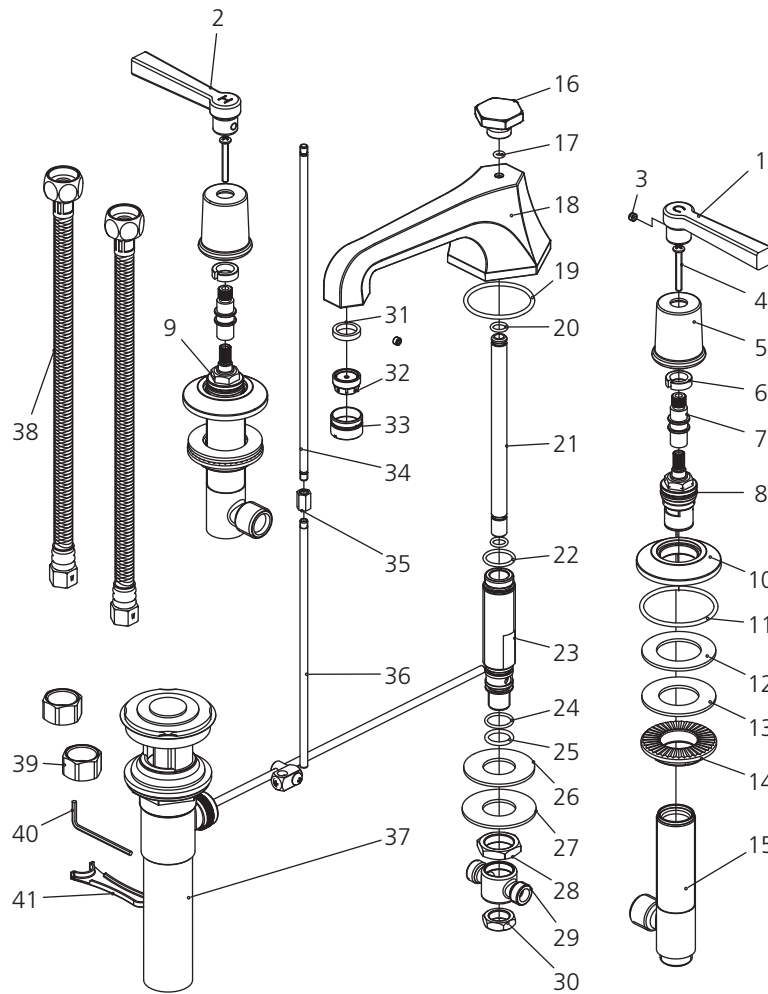




# M1-1101 (ML 1228)

LEVER 3-HOLE BASIN MIXER WITH P.U.W.

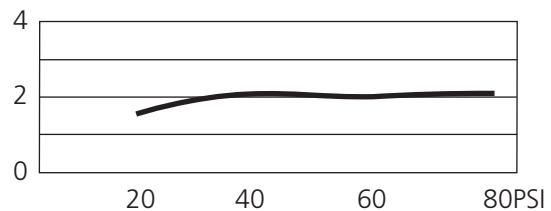


- |    |                              |    |                           |    |                           |
|----|------------------------------|----|---------------------------|----|---------------------------|
| 1  | Handle ( C ) (029686C)       | 15 | Body (061893W)            | 29 | Connector (015001W)       |
| 2  | Handle ( H ) (029686H)       | 16 | Pop-up knob (124390-50)   | 30 | Nut (009002)              |
| 3  | Set screw (292598)           | 17 | O-ring (048027N)          | 31 | Oil-seal (010095N)        |
| 4  | Screw (008972)               | 18 | Spout (002252W)           | 32 | Aerator insert (553601N)  |
| 5  | Canopy (018040)              | 19 | O-ring (004072N)          | 33 | Aerator housing (033071N) |
| 6  | Clip (012242)                | 20 | O-ring (004001N)          | 34 | Pop-up rod (125412)       |
| 7  | Extension stem (110409)      | 21 | Brass tube (043412N)      | 35 | Connector (077125)        |
| 8  | Cartridge ( Cold ) (507176N) | 22 | O-ring (004043N)          | 36 | Pop-up rod (110041)       |
| 9  | Cartridge ( Hot ) (507175N)  | 23 | Connection tube (014016W) | 37 | Pop-up waste (556781)     |
| 10 | Escutcheon (071473)          | 24 | O-ring (004115N)          | 38 | Flexible hose (105750W)   |
| 11 | O-ring (004617)              | 25 | O-ring (004005N)          | 39 | Pipework nuts (504003)    |
| 12 | Oil-seal (010017)            | 26 | Spacer (060041)           | 40 | Allen key (031000)        |
| 13 | Washer (013158)              | 27 | Washer (013202)           | 41 | Spanner (031025)          |
| 14 | Nut (009834)                 | 28 | Nut (009009)              |    |                           |

## Standards

IAPMO/cUPC Listed  
Meets NSF 61-9  
Meets A112.18.1

## Flow Rate



Please note :

Final achievable flow rate is dependent on the outlets fitted, see relevant outlets (spouts, roses, sprays) for fully assembled product flow rate.