

4x6 Victorian Manual



Tools Needed:

- Cordless Drill (12V or higher)
- #2 Square Drive Bit
- Hammer
- 6' Step Ladder
- Tape Measure
- Square utility knife
w/ blade & hook blade
- Speed Square



Little Cottage Co.®
PO Box 455
Berlin, OH 44610
330-893-4212
www.cottagekits.com

© 2007-2008 Little Cottage Co.

4x6 Victorian Manual



1



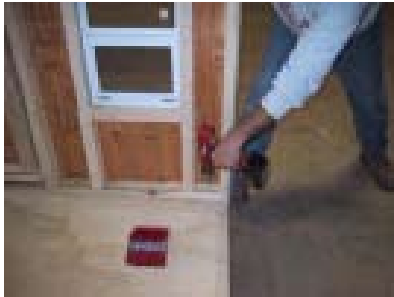
Thank You for purchasing from Little Cottage Co. You can begin your playhouse assembly by placing the floor on the flat surface where it is to be located, and install panel A.

2



Make sure the sides are even and the siding is in against the floor.

3



Next fasten it on the inside.

4



Install panel B in the same manner.

5



Install panel C. and again make sure the siding is in against the floor.

6



Next fasten the endwall truss, keep it even with the 2x6.

4x6 Victorian Manual



7



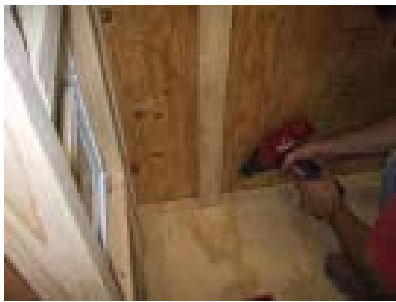
Another view of how it should look.

8



Fasten along the bottom edges, and make sure the wall is square with the building before fastening.

9



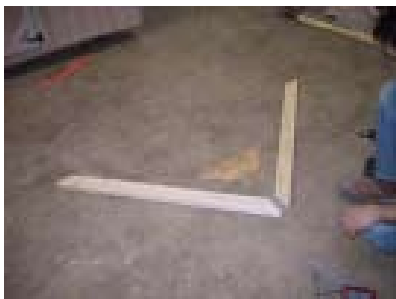
Next fasten it on the inside.

10



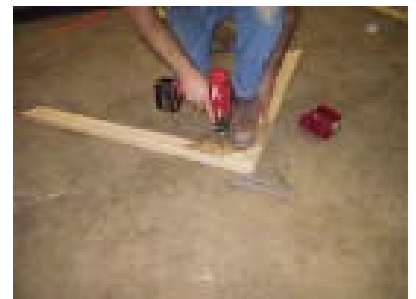
Then install panel D in the same manner.

11



This pictures shows the 2x3 trusses and gusset. Be sure not to use the rear truss to make the trusses, it is shorter.

12



Use the gussets to fasten the trusses. Keep them even on the top and do not allow gussets to extend past the 2x3's.

4x6 Victorian Manual



13



Next place the trusses in the premarked spots.
Note: the truss does not extend over the gingerbread.

14



Assemble the 2 pieces to make a T-bar.

15



Set one piece of dormer gingerbread as shown.

16



Note: see how the gingerbread pieces are even with each other. And up against the truss.

17



Fasten this. Repeat on the other side.

18



Now place the dormer piece behind these. Do not fasten yet.

4x6 Victorian Manual



19



Place the T-bar as shown.

20



Fasten the T-bar on top of the dormer. Be sure to push it in and down against the dormer.

21



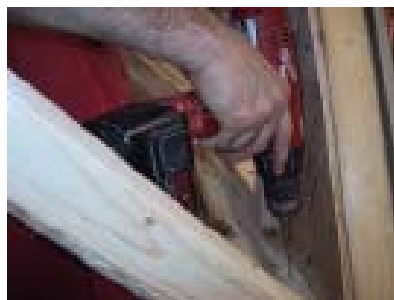
Then you can fasten the T-bar onto the trusses. Keep even with the truss as shown.

22



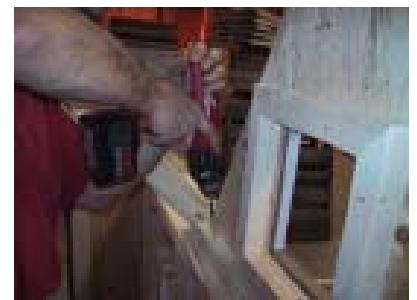
Now, fasten the dormer piece to the front of the gingerbread pieces.

23



Now you can fasten the back end of the dormer

24



Continue by fastening on both sides of the dormer.

4x6 Victorian Manual



25



Install 4 corner pieces of gingerbread. Be sure to match the markings for each one.

26



Next install the rear truss.

27



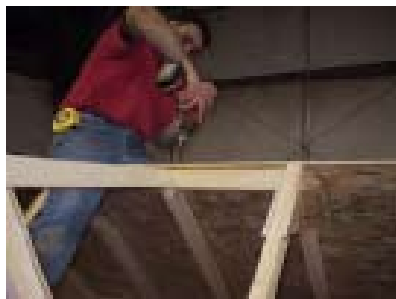
Install the rear piece of OSB sheathing. Fasten only on the bottom corners for now.

28



Measure and make sure the T-bar is in the center of the building before fastening the rest of the sheathing.

29



Continue to fasten the sheathing.

30



Install the front piece of OSB roofing.

4x6 Victorian Manual



31



Now install the other side.

32



Then you can install the dormer piece.

33



Be sure to fasten both sides.

34



Remove packing screws from the adult door and child door.

35



Continue by fastening the gingerbread trim to the front.

36



Install the door knob and 3 door handles.

4x6 Victorian Manual



37



Install the heart window. fasten using the small OSB strips.

38



Next install the shutters and flowerboxes.

39



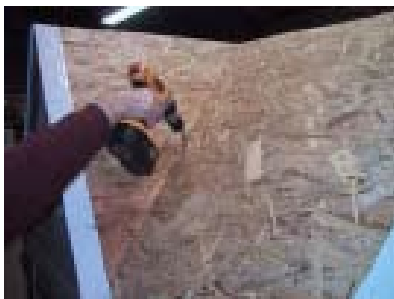
These are the V-channel roof braces.

40



Now have someone hold these in place from the inside. Make sure all 3 pieces of OSB are included with the correct angle of the V-brace toward the bottom.

41



Fasten using black headed screws from the top with the other person holding the V-brace.

42



Next install the drip edge. (this you should have purchased at your local home improvement store). You can use tin snips or side cuts to cut the drip edge and make cuts so that it fits the angles on the roof. Fasten with 3/4" roofing nails.

4x6 Victorian Manual



43



Now your building is ready for shingles. Cut the tabs off of the shingles and install a starter strip. Notice the glue strips toward the bottom. Fasten with 3/4" roofing nails.

44



Install more shingles allowing them to go up onto the dormer as pictured. Do this all the way to the top.

45



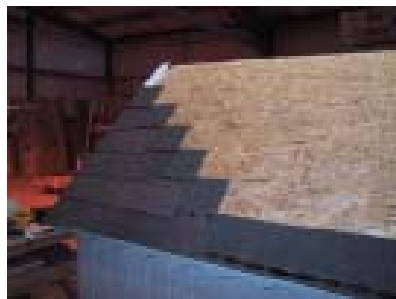
Now snap a chalk line down the valley and install shingles on the dormer.

46



This picture shows you how to use a straight edge and hook knife to cut shingles. Do not cut into the next layer of shingles.

47



Then install the shingles on the back side.

48



You will need to cut some pieces like this to use for the ridge cap.

4x6 Victorian Manual



49



Install the ridge cap as shown.

50



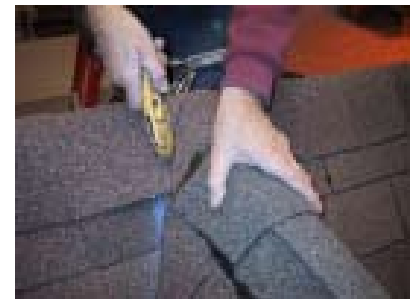
When you reach the center make cuts on either side as the picture shows.

51



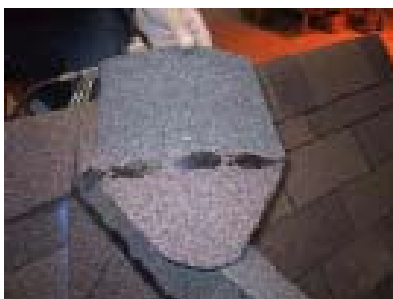
Install the other piece and make a cut.

52



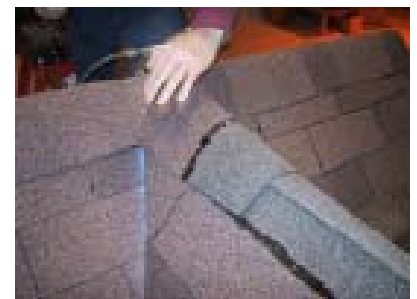
Then you can lay a ridge cap down and cut it to make the right fit.

53



This shows roughly how it will look.

54



and install another piece after that.

4x6 Victorian Manual

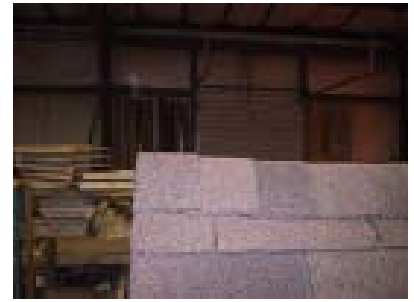


55



Continue to the edge of the roof.

56



Finish off the ridge cap as shown. You will use a single tab to cover the ends.

57



Lastly install the shutters and flowerboxes. Finiah by installing the outside corner trim with white aluminum nails. Make sure you do not “wrinkle” them, be sure to hold them in correctly when fastening.

58



Your playhouse is finished! Enjoy your product and thank you again for purchasing from Little Cottage Co.