



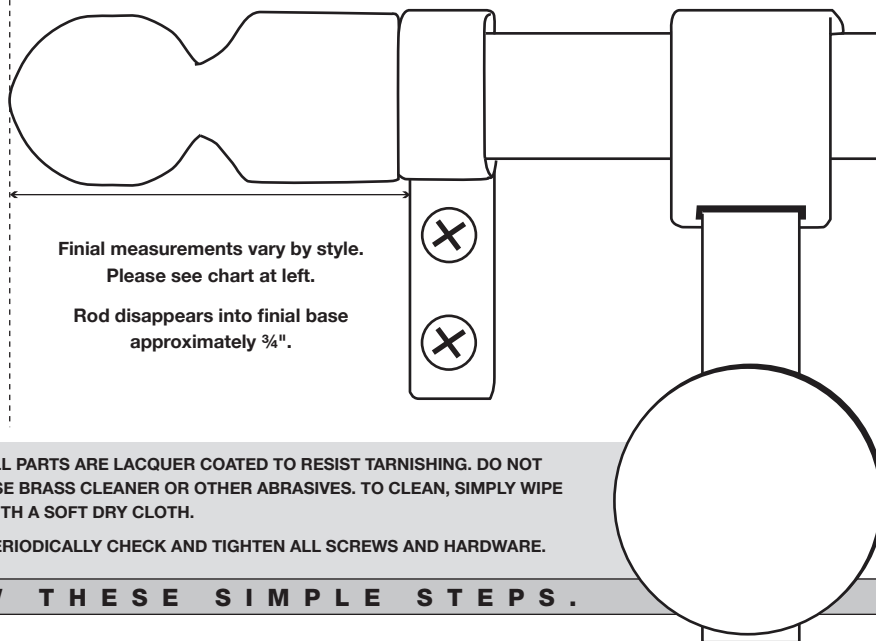
Grand Regency™ WALL HANGER

INSTALLATION INSTRUCTIONS

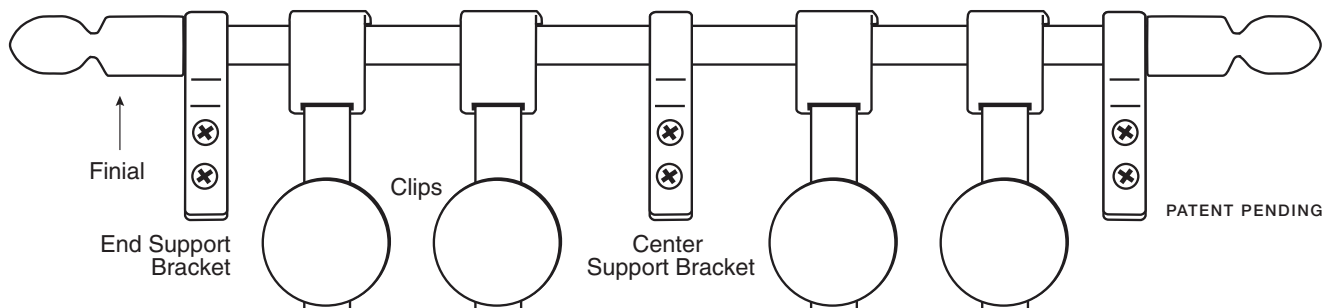
PATENT PENDING

SPECIFICATIONS

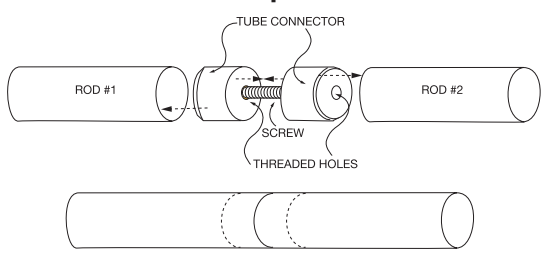
FINIAL	LENGTH
Pineapple	3 1/4"
Ball	2 1/2"
Urn	2 5/8"
ROD GAUGE:	.031"
ROD DIAMETER:	3/4"



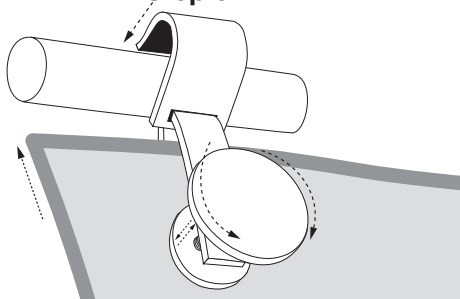
JUST FOLLOW THESE SIMPLE STEPS.



Step 1.



Step 6.



If you are using a Grand Regency Add-On Set with a Grand Regency Base Set, begin with step 1; otherwise skip to step 2.

- Using a hammer, insert one side of the tube connector into open end of the rod. Insert the other side of tube connector into the second rod. Twist the tube connector closed, bringing the two rods together to make one continuous rod. Repeat for each Add-On set.
- Attach finial to rod by inserting rod into the finial base and tightening the small set screw.
- Slide support brackets onto the rod and attach remaining finial to rod by tightening the small set screw previously attached to the finial base.
- Locate desired position of support brackets on the wall, making sure the rod is level. A support bracket should be positioned near both ends of the rod and the remaining support bracket(s) should be in the center or evenly spaced on the rod if there is more than one center support bracket.
- Mark the installation holes of support brackets. Install the support brackets using screws provided. You must use wall anchors (not included) suitable for your wall material if screws are not installed into a stud.
- Slide rug or tapestry as far as possible into the hanging clips. Twist clips as tightly as necessary to securely hold your rug or tapestry in place. Hang rug or tapestry by placing clips over the rods.