

# Antique Rural Mailboxes



4850A

## ANTIQUE RURAL MAILBOXES

### U.S.P.S. APPROVED

Made entirely of aluminum, Salsbury U.S.P.S. approved 4800 series antique rural mailboxes are available in four (4) attractive powder coated finishes. These mailboxes provide an antique look that adds elegance to any home. Each antique rural mailbox features a 1/8" thick extruded aluminum body and a 1/8" thick die cast aluminum front door and rear cover. Each mailbox includes a magnetic door catch and an adjustable burgundy signal flag. The die cast door is attached to the body with a full width stainless steel hinge allowing for smooth operation. See additional specifications on page 69. Antique rural mailboxes can be mounted on standard, classic, decorative or deluxe mailbox posts (see pages 76-79), spreaders (see page 76) or a base of your choice. Antique rural mailboxes are approved for U.S.P.S. curbside mail delivery.

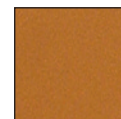
#### 4850A Antique Rural Mailbox

- 7-1/2" W x 9-1/2" H x 20-1/2" D
- 15 lbs.
- \$100.00

Specify



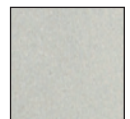
bronze



copper



brass



nickel

**Custom**  
Numbers / Letters see page 101

### REPLACEMENT FLAGS

Made of heavy duty 1/4" thick die cast aluminum, antique mailbox replacement signal flags have a durable powder coated burgundy finish and easily attach to antique rural mailboxes. Mailbox flags include stainless steel mounting hardware.

#### 4816A Replacement Flag

- 2-3/4" W x 8" H x 1/4" D
- 1 lb.
- \$10.00



4816A

#4850A on a 1-sided deluxe post (#4870) in brass finish mounted on the right side (see page 79) with custom numbers / letters (see page 101) displayed

**Volume Discount Pricing Available On-Line!**

## ANTIQUE NEWSPAPER HOLDERS

Made of heavy duty aluminum, Salsbury antique newspaper holders are a unique option for antique rural mailboxes. Each unit has a solid back and includes mounting hardware to easily attach to mailbox posts and spreaders (see pages 76-79). Antique newspaper holders are available in four (4) attractive powder coated finishes.

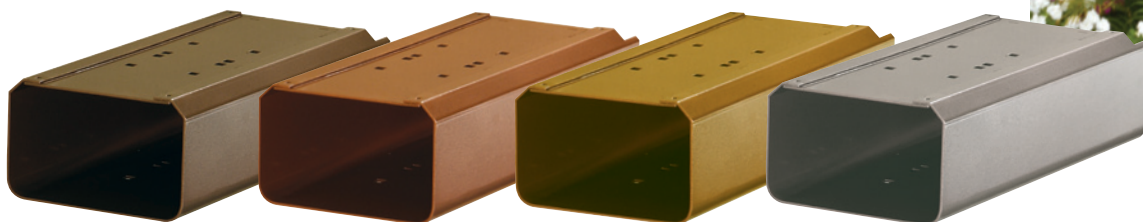
### 4815A Antique Newspaper Holder

- 7-1/4" W x 4-1/2" H x 16" D
- 10 lbs.
- \$50.00

- Specify
- bronze
  - copper
  - brass
  - nickel



(2) #4850A's and (2) #4815A's on a two (2) wide spreader (#4882) mounted on a standard post (#4865 - see page 76) in bronze finish displayed



4815A

## Deluxe Rural Mailboxes - U.S.P.S. APPROVED



Made entirely of aluminum, Salsbury U.S.P.S. approved 4800 series deluxe rural mailboxes feature a 1/8" thick extruded aluminum body and a 1/8" thick die cast aluminum front door and rear cover. Deluxe rural mailboxes also feature a durable textured powder coated finish available in two (2) colors and include an adjustable burgundy signal flag and a magnetic door catch. A full width stainless steel hinge attaches the die cast door to the body allowing for smooth operation. See additional specifications on page 69. Deluxe rural mailboxes and optional matching deluxe newspaper holders can be mounted on standard, classic, decorative or deluxe mailbox posts (see pages 76-79), spreaders (see page 76) or a base of your choice. Deluxe rural mailboxes are approved for U.S.P.S. curbside mail delivery.

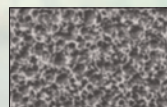
### 4850D Deluxe Rural Mailbox

- 7-1/2" W x 9-1/2" H x 20-1/2" D
- 15 lbs.
- \$100.00

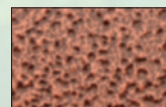
### 4815D Deluxe Newspaper Holder

- 7-1/4" W x 4-1/2" H x 16" D
- 10 lbs.
- \$50.00

Specify



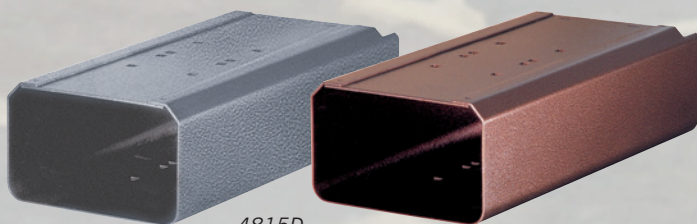
pewter



mocha



4850D



4815D

### REPLACEMENT FLAGS

Made of heavy duty 1/4" thick die cast aluminum, deluxe mailbox replacement signal flags have a durable powder coated burgundy finish and easily attach to deluxe rural mailboxes. Mailbox flags include stainless steel mounting hardware.

### 4816D Replacement Flag

- 2-3/4" W x 8" H x 1/4" D
- 1 lb.
- \$10.00



4816D

**Featuring an Elegant Textured Finish**