

INSTRUCTION MANUAL

Safety Warnings.

This product is only suitable for connection to a 240V~50Hz supply and is for indoor use only.

Switch off the mains supply and remove the appropriate fuse or switch off the appropriate circuit breaker before commencing installation.

Typical 2 core cable used for pendant lamp holders is 0.75mm². The maximum weight of a shade that should be suspended on this size of cable is 2.2Kg. If you are in doubt about the size of your cable please consult a qualified electrician. (Approximate weight of this fitting is 0.80Kg).

Never fit bulbs of a higher wattage or of a type other than those specified on the label.

The shade may become hot during use so please switch off and allow 10 minutes to cool before replacing bulb, adjusting or cleaning.

Clean with a dry cloth only. Do not use liquid or abrasive cleaners on this product

If any modification is made it will invalidate the warranty and may render the product unsafe.

Before you start

Please read these instructions carefully before fitting your new shade and retain for reference.

Check the packaging and make sure that you have all the required parts.

Follow each assembly step in order to prevent incorrect assembly.

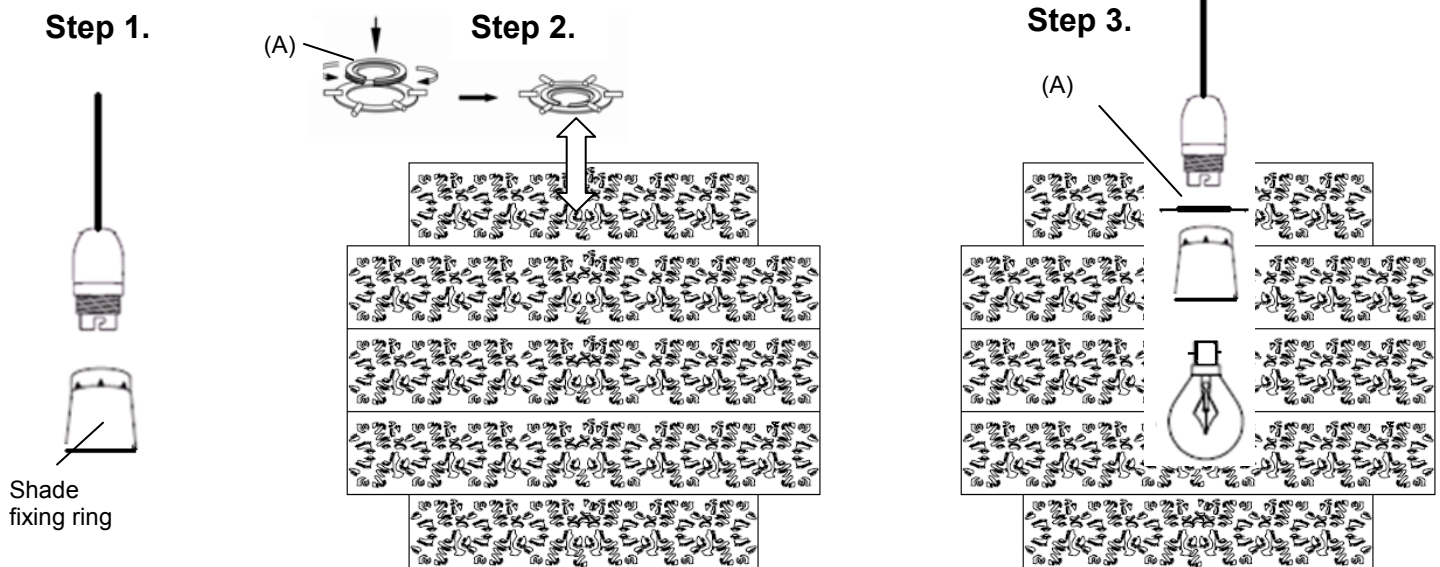
Ensure that the product is fully assembled as illustrated before use.

Ensure that your pendant wiring is clamped correctly in the ceiling rose and in the lamp holder and that the cable is in good condition. We recommend that it is at least 100mm in length.

This fitting can be fitted to either a B22/BC or an E27/ES type lamp holder by using the shade reducer.

Assembly/ User Instructions

Unpack your Non-electric pendant shade and locate and familiarise yourself with the parts provided then follow steps 1 - 3.



Step 1. Remove the shade fixing ring from the lamp holder.

Step 2. If your current pendant lamp holder is a standard Bayonet cap lamp holder type (B22/BC) the shade reducer (A) will need to be positioned on the pendant frame to reduce the shade hole size. **The shade reducer is shown being fitted here.**

If your current pendant lamp holder is an Edison Screw (E27/ES) type or a specialist low energy lamp holder there is no need to use the shade reducer ring (but keep it in case the pendant is moved to another (BC) lamp holder).

Step 3. Re-fit the shade fixing ring to secure the pendant on the lamp holder, do not over-tighten.

Install the bulb.

NOTE: Do not install bulbs with a greater wattage or different shape than specified on the label.

Turn on and test.