

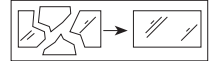
ENDON®

Spengler Wall Light

INSTRUCTION MANUAL

Safety Warnings

- This product is suitable for connection to 240V~50Hz supply, in an outside location.
- It is recommended that this light be installed by a qualified electrician in accordance with current IEE Wiring Regulations and Building Regulations (Part P).
- Always switch off the mains supply and remove the appropriate fuse or switch off the appropriate circuit breaker before commencing installation.
- This is a Class I fitting, and **must** be connected to Earth. The terminal blocks are supplied according to requirements of the fitting.
- Never fit bulbs of a higher wattage than those specified on the label (as these may cause overheating and damage the fitting).
- This product contains delicate parts. Take care during installation and maintenance to avoid breakages
- Run supply wire from a 5-amp electrical supply using double insulated 3-core cable of type H05RN-F 1.0mm² (not supplied) to selected site, ensuring it is adequately protected through the full length of the cable run, it must come out of the flat surface of the wall or steps in line with the entry to the fitting.
- Except where installed in a conduit or duct which provides equivalent protection against mechanical damage, a cable buried in the ground shall incorporate an earthed armour or metal sheath or both, suitable for use as a protective conductor, or be of insulated concentric construction. Buried cables shall be marked by cable covers or a suitable marking tape. Buried conduits and ducts shall be suitably identified. Buried cables, conduits and ducts shall be at a sufficient depth to avoid being damaged by any reasonably foreseeable disturbance of the ground.
- An electrician **must** be consulted if in any doubt about your own competency.
- If any modification is made it will invalidate the warranty and may render the product unsafe.
- If the glass or diffuser is broken or cracked it must be replaced, please consult your retailer.



Care Information

Allow 10 minutes to cool before replacing, adjusting or cleaning.
Clean with a dry cloth only. Do not use liquid or abrasive cleaners on this product.

Assembly/ User Instructions

Before you start

Please read these instructions carefully before fitting and retain for reference.
Check the packaging and make sure that you have all the required parts.
Follow each assembly step in order to prevent incorrect assembly.
Ensure that the product is fully assembled as illustrated before use.

The Light pack contains:

Light fitting.
Terminal connection block(s).
Fixing pack.

The following tools may be required:

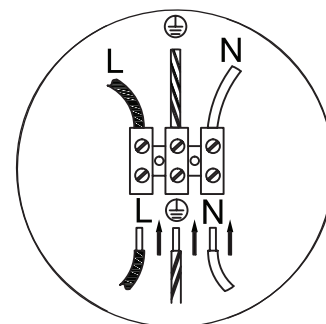
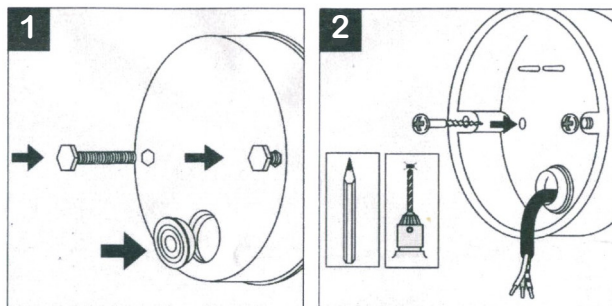
Selection of cross and flat head screwdrivers.
Electric drill and assorted drill bits.
Wire strippers.
Electrical insulation tape.

These assembly diagrams are intended as a guide – if in doubt consult a qualified electrician.

1. Decide on the position of the light fitting / or remove existing light fitting. Take a note of the position of the electrical connections. Ensure there is a solid mounting, preferably a brick or block wall. If the wall is timber frame and plasterboard construction then please use appropriate fixings for plasterboard or screw directly into the timber frame. Ensure the fixing can support the weight of the wall light, and take note of the direction of the fitting.

Assembly/ User Instructions Continued

- Thread the bolts through the back plate (1). After making a small hole for the cable, install the grommet.
- Use the backplate as a template to mark and make the holes (2). Pass the house supply cable through the grommet and fix the backplate to the wall using appropriate fittings, and ensuring it is level. Ensure also a good seal around the house supply cable using silicon sealant if necessary.
- Support your fitting and connect the house wiring to the terminal block (3) - see extended wiring diagram below. When you are sure of the connections wrap the Terminal Block and overlap the wiring both sides with 2 layers of insulation tape. **NOTE: This is a Class I fitting and must be earthed.**
- (4) Mount the terminal block on the plastic pegs on the backplate. Using the domed finials, fit the lantern arm onto the bolts. Ensure no wires are trapped and that the backplate is sealed correctly against the inside of the lantern arm.
- Take the lantern frame and fit the top Finial as shown (5).
- Fit the bulb. **NOTE: Never fit bulbs of a higher wattage than those specified on the label (as these may cause overheating and damage the fitting).**
- Finally fit your lantern together and secure with the 2 hexagonal headed screws. Ensure the frame is seated correctly to give a good seal.
- Turn on the power and test.



3. Details of terminal wiring.

