

7' x 7' Summer House

IMPORTANT, RETAIN FOR FUTURE REFERENCE; READ CAREFULLY

Check all parts prior to assembly

- Most buildings are pre-treated with a factory base coat for protection during storage and transit. We recommend that you treat your new building as soon as possible after assembly using a wood preservative treatment. Apply in accordance with the manufacturers instructions.

- Timber is a natural material. It will shrink and swell as a result of varying moisture content.

- Please keep all plastic bags and small parts away from children

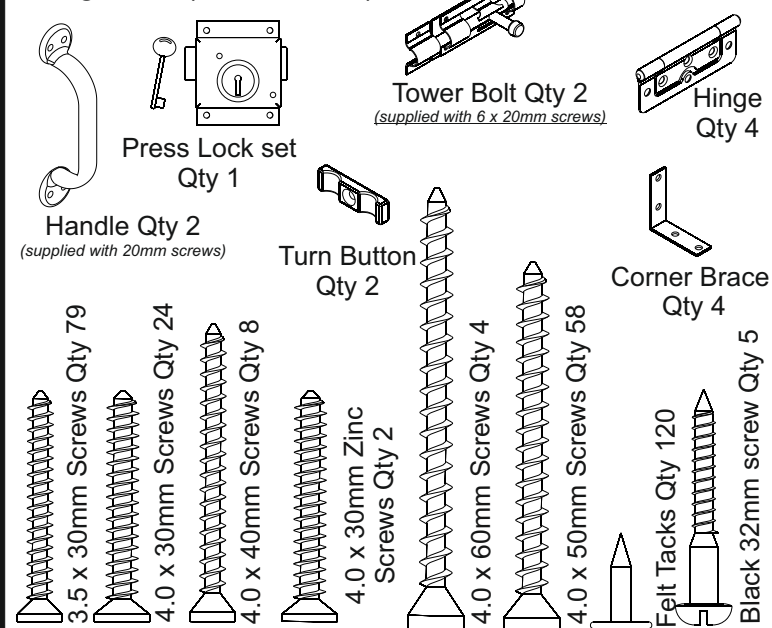
- This product must be built on a solid level base.

Technical Help line: **0333 7777 089** 8.30 am and 5.00 pm

Monday to Friday.

In line with your statutory rights, please check all parts prior to assembly, as assembly of damaged parts may be deemed to be acceptance and this may affect the remedies you are entitled to. If the product is not constructed in accordance with the instructions, or is altered in anyway (e.g. painted), the manufacturer cannot be held liable for any resulting damage

Fixing Pack (ASUM77FP)



REQUIRED TOOLS : (NOT SUPPLIED)

SHARP KNIFE FOR ROOFING FELT



POZI DRIVE SCREWDRIVER

HAMMER



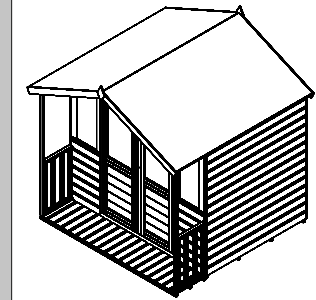
SPIRIT LEVEL



TAPE MEASURE



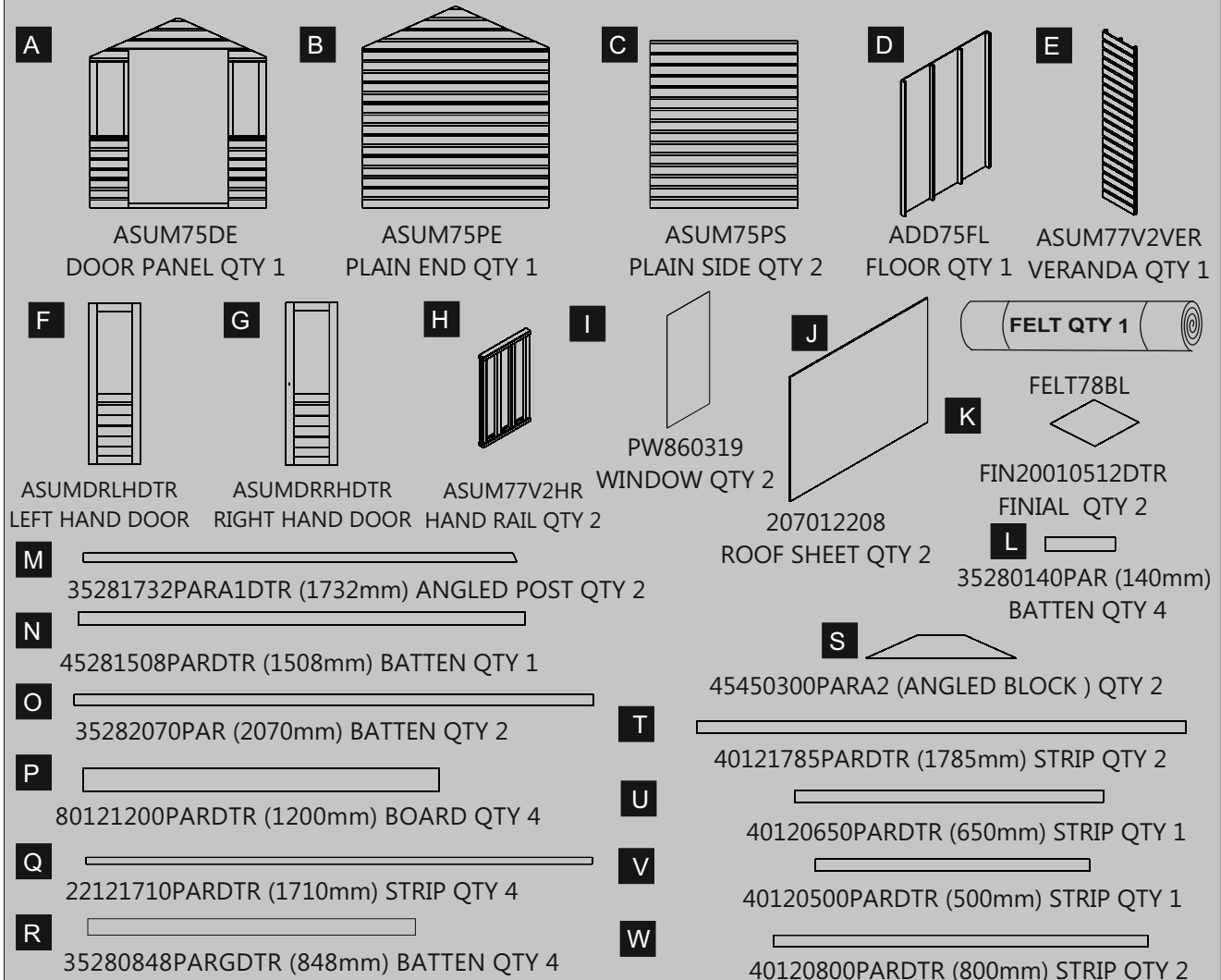
Important : Assembly of this building requires a minimum of two adults.



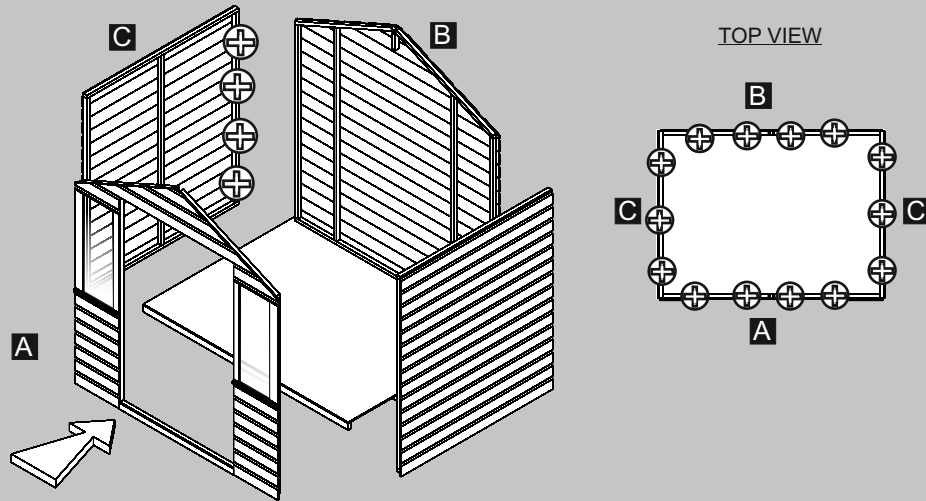
ASUM77FP

ISSUE 0216

Parts:



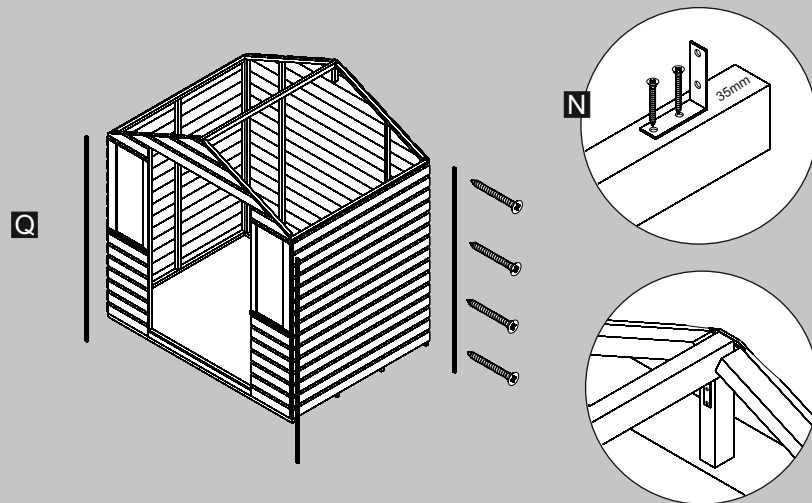
1



Place the panels on to the floor (D) as shown making sure that they are tight and flush. Fix the panels to each other using **4x50mm** screws for each joint.

Make sure that all four sides are square and fix them to the floor using 50mm screws. Use **4x50mm** screws for the door end (A) and plain end (B). Use **3x50mm** screws for the sides. (C)

2

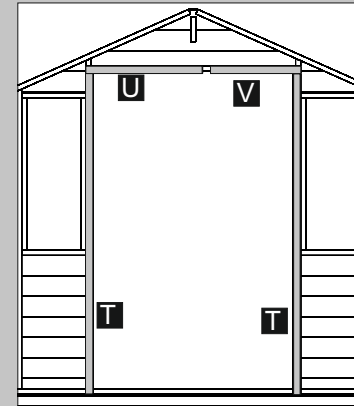


Place each of the 1710mm strips (Q) against the corners of the building. Fix each in place using **4 x (3.5 x 30mm)** screws.

Fix a corner brace to each end of the 1508 batten (N) on the 28mm side. Make sure that it is positioned as shown and is 35mm from the end. Fix in place using **2 x (3.5 x 30mm)** screws for each.

Place the batten at the apex so that it sits on the blocks on the front and back panel. Use **2 x (3.5 x 30mm)** screws to secure each of the corner braces to the blocks.

3



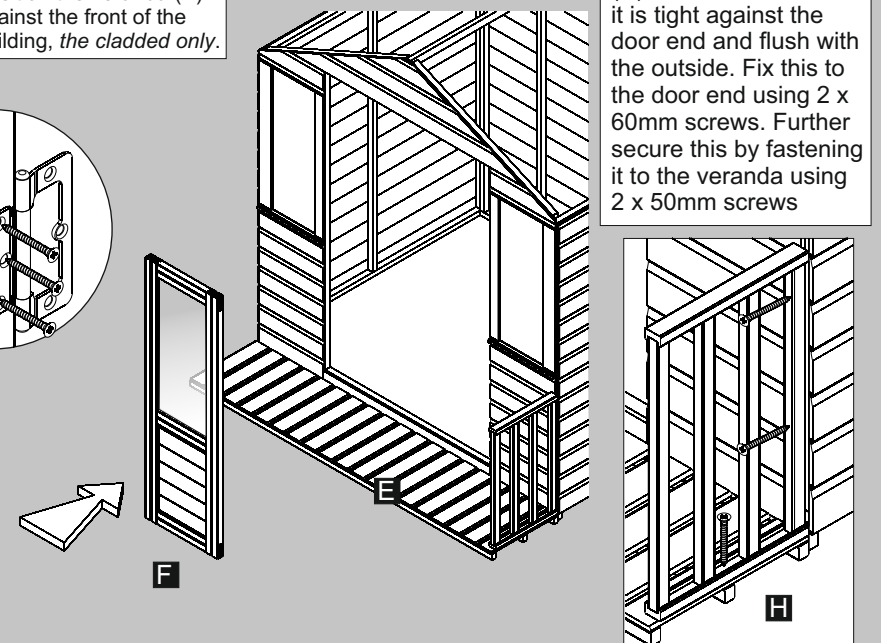
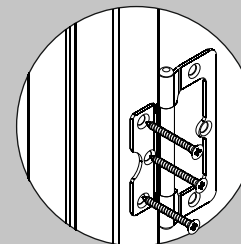
From inside the building fix the two 1785mm strips (T) to the sides of the door, lining them up so that they are flush on one side and overhang the entrance slightly. Fix each using **3 x (3.5 x 30mm)** screws.

Place the strips (U) and (V) above the entrance as shown, again lining these up with the top of the framework. There should be a 46mm gap between the two strips.

Fix each in place using **2 x (3.5 x 30mm)** screws.

4

Position the veranda (E) against the front of the building, *the cladded only*.

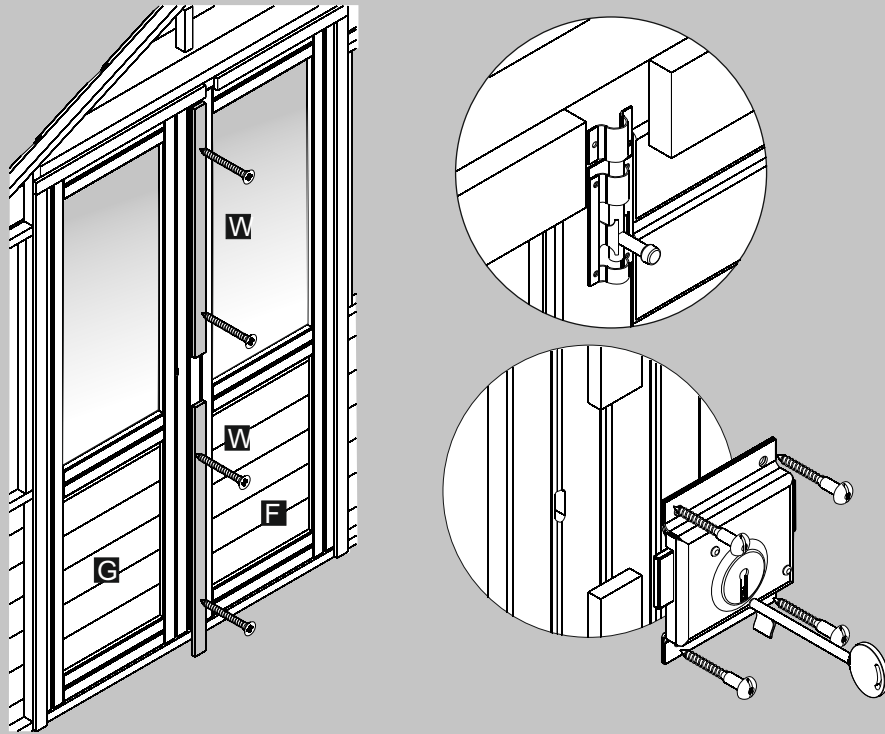


Place a handrail section (H) on the floor so that it is tight against the door end and flush with the outside. Fix this to the door end using **2 x 60mm** screws. Further secure this by fastening it to the veranda using **2 x 50mm** screws

Fix two hinges to each of the doors using the smaller plate of the hinge as shown and (4.0 x 30mm) screws. Place the doors into the entrance and secure the other half of the hinge to the entrance framework.

Make sure there is enough clearance around the doors so that they can move freely.

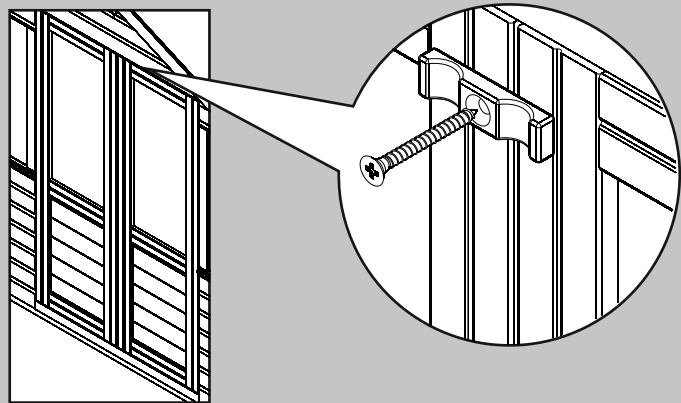
5



Fix both of the 800mm strips (W) to the inside of door (F) so they are flush with the top and bottom of the door and overhang the side by 20mm. Fix each strip in place using 2 x (3.5 x 30mm) screws.

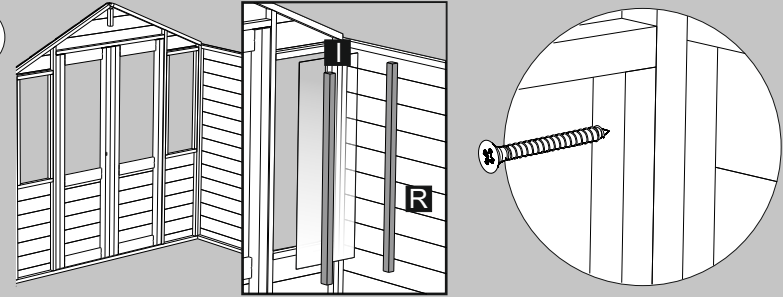
Fix a shoot bolt to the top and bottom of the door. Fix the receiver to the framework between the two strips as illustrated. Use the 20mm black screws provided.

Still from inside the building line the lock up with the key hole in the door and fix using the 4 x 32mm black screws.



From outside of your building fix a turn button to the top and bottom of the left hand door using 2 x (4.0 x 30mm zinc) screws. Make sure that the turn button will reach across both doors when in its closed position.

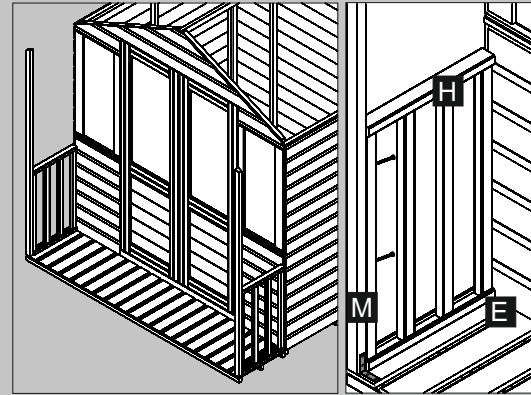
6



Place the window (I) into the door end so that there is an equal gap each side before placing an 848mm (R) (*rebated*) batten on either side. The rebate should sit against the window.

Fix each batten in place using 3 x 50mm screws screwing into the door ends framework.

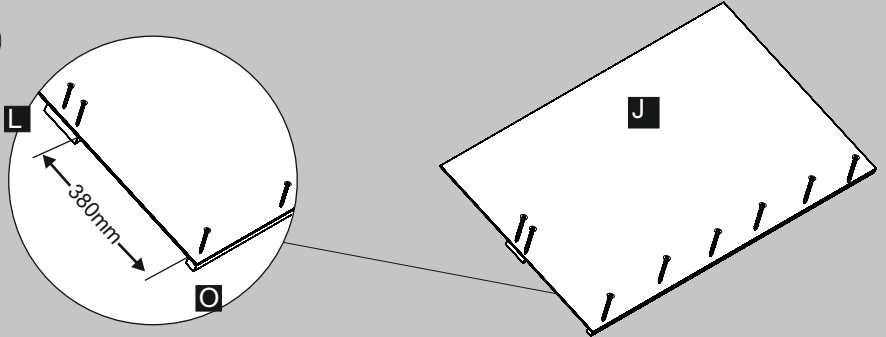
7



Place a 1732mm angled post (M) against the end of the handrail so that the pitch of the angle is towards the apex. Fix this in place using a corner bracket. Use 2 x 50mm screws to secure each bracket to the floor and 2 x (3.5 x 30mm screws) to secure this to the post.

Further secure the post to rails using 2 x 50mm screws.

8



Place the roof sheet (J) on to a 2070mm batten (O) so that it sits on to the wider face and is flush with the sides. Fix using 6 x (3.5 x 30mm) screws spaced evenly.

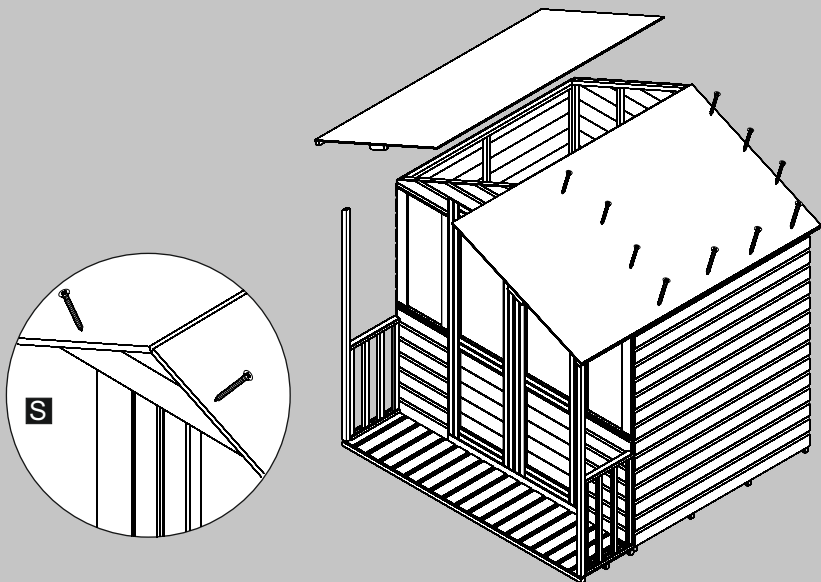
fix one of the 150mm blocks (L) so this is flush with the roof sheet but is 380mm apart from the batten. Fix using 2 x (3.5 x 30mm screws).

Repeat this for the other roof to make a left and right hand roof section.

9

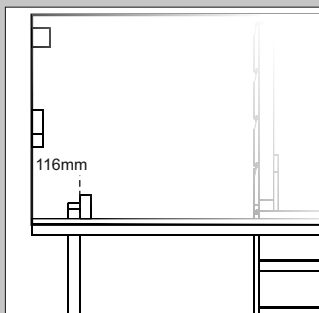
Place the roof sections on to the building so that the smaller 150mm blocks are at the front and the roof is flush at the back. Use 4 x 40mm screws to secure the roof to the side panels and 6 x (3.5 x 30mm) screws to secure the roof section to the front and back panels.

Fix the roof section to the top of the 1508mm batten (N) with a single 50mm screw.



Place the 300mm angled block (S) underneath the two roof sections at the front of the apex.

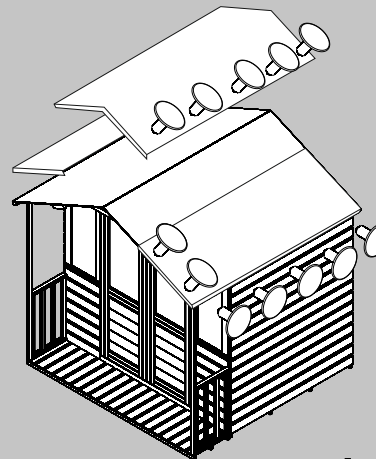
Fix this in place screwing through each roof in to the block using 2 x (3.5 x 30mm) screws.



Position the remaining 150mm battens (K) against the inside of the roof so that it is tight against the veranda post (approximately 116mm). Fix the block to the roof using 2 x (3.5 x 30mm) screws, screwing down through the roof.

Fix the veranda post (M) to the block using 1 x 50mm screw.

10

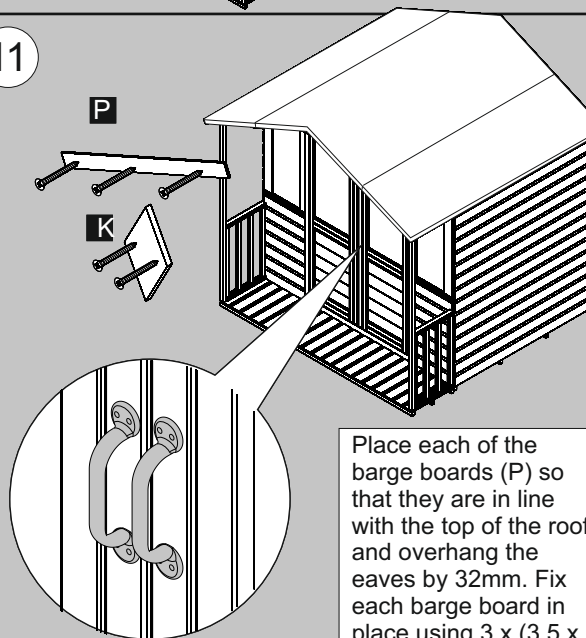


ATTENTION:
TAKE CARE
WHEN TRIMMING
THE ROOF FELT.

Place two pieces of the felt on the lower sections of the roof. Make sure these are positioned centrally and have an overhang of approximately 50mm. Secure each piece in place using felt nails spaced in 150mm intervals.

Place the third sheet of felt over the top of the apex so that it overlaps the other two sections. Again secure this in place using felt nails spaced in 150mm intervals.

11



Place each of the barge boards (P) so that they are in line with the top of the roof and overhang the eaves by 32mm. Fix each barge board in place using 3 x (3.5 x 30mm) screws).

Trim off any excess felt that sticks out below the boards.

Mark and position a handle on to each of the doors. Fix each using the 4 x 20mm screws provided.

Place a finial (K) over the join of both barge boards at the apex. Fix each in place using 2 x (3.5 x 30mm) screws)

Maintenance.

- Regularly check all fixings and parts are secure.
- Visually check for wear and tear.
- Check your roof felt for tears and leaks.

Biocidal Product Regulation (EU 528/2012) Article 58 Information

This article contains timber treated with Celcure AC-500, incorporating biocidal products to give protection against wood destroying insects & wood rotting fungi.

Contains: Basic copper carbonate (Copper (II) carbonate – Copper (II) hydroxide (1:1)), Boric acid, Benzalkonium chloride.

Wear gloves when handling freshly treated wood. Avoid breathing dust when cutting treated or untreated wood. Dispose of off-cuts responsibly – do not burn.