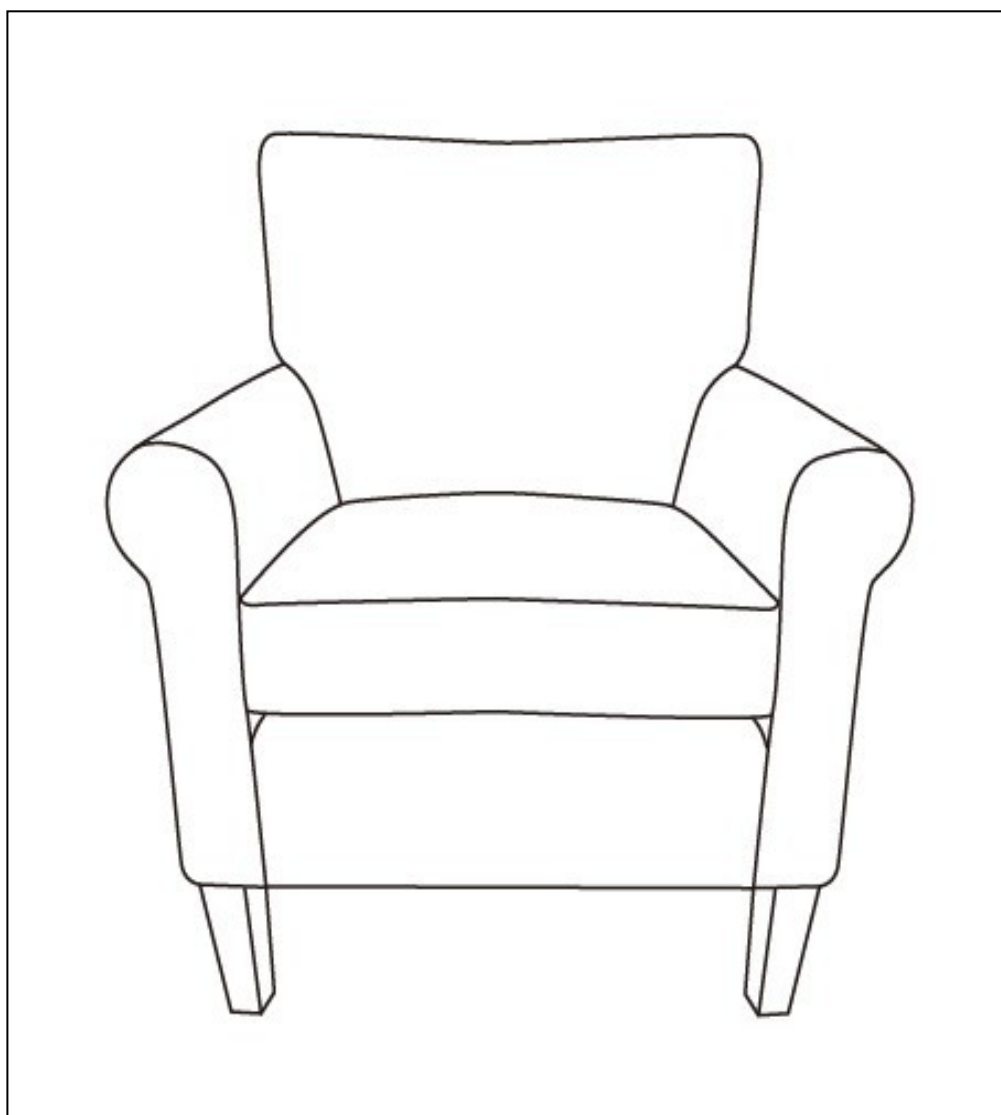





Assembly Instructions


Club Chair



Parts List

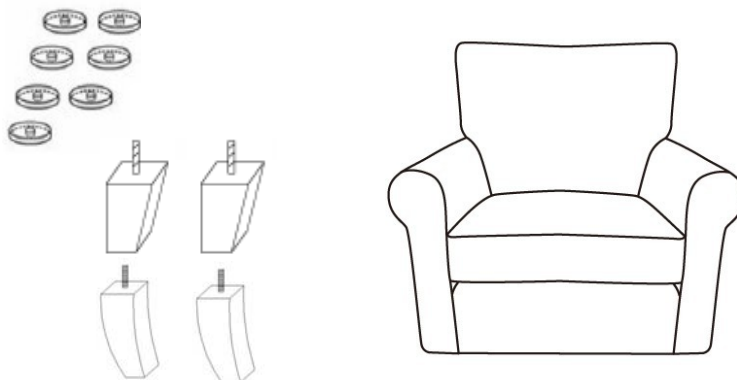
Label	Picture	Description	QTY
A		Chair	1
B	  B1 B2	Wooden leg	B1-2pcs B2-2pcs

Hardware

Label	Picture	Description	QTY
1		Washer Rings	7 pcs

Assembly Preparation

Before Beginning Assembly:



- Read instructions, cover to cover-



- Have 2 adults on hand for assembly-



- Do not assemble on flooring or carpet-



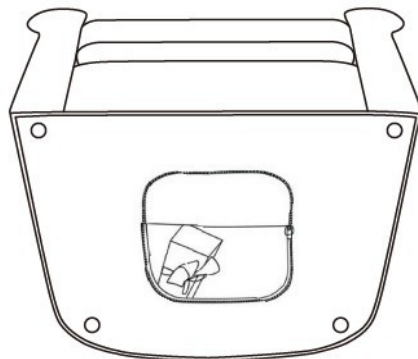
- Assemble on a clean non-marring surface (packing foam)-



- Save all packaging until finished-

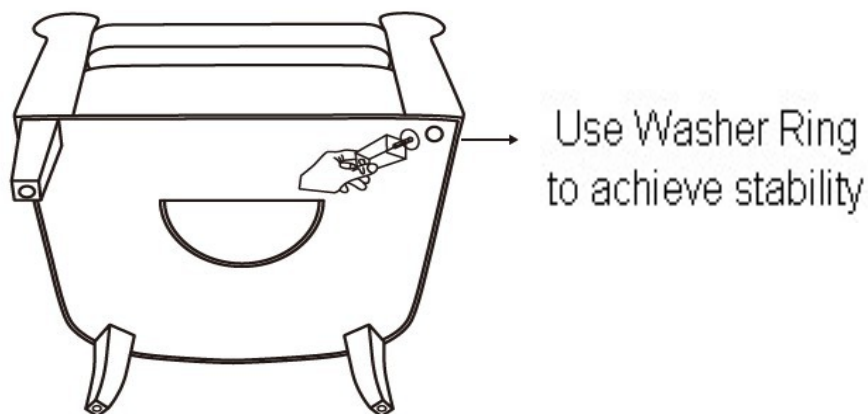
Assembly Steps

Step 1



Position the Chair on its back, as shown.
(DO NOT place on surface that can scratch or damage upholstery.)
Unzip the pouch located on the underside of the chair as shown in picture.
Remove the box from inside this pouch.
Open the inner box and take out the 4 Wooden legs provided.
Close pouch before assembling.

Step 2



Install the B1 leg into the screw holes under the front of the chair.
Placing a washer ring (improves tightness) around threaded bolt in the leg.
Then insert the threaded bolt into the bolt point at the bottom of the chair.
Tighten leg by turning clockwise.
Repeat the same procedure to install the three remaining legs.
B1 - STRAIGHT legs are chair's FRONT legs.
B2 - CURVED legs are chair's REAR legs.

Care & Maintenance



● Do not put hot items directly on furniture surface.



● Do not clean furniture with harsh cleansers or polish.



● Do not place furniture under direct sunlight.



● Do not place furniture near heating or cooling vents.



● Do not write on furniture without a padded barrier to protect the surface.



● Do not place furniture outside. For indoor use only.



● Not for commercial use. For residential use only.



● Stains may be removed with mild soap solution and damp cloth.



● Dust and pick-up spills using a clean, non-colored, lint-free cloth.