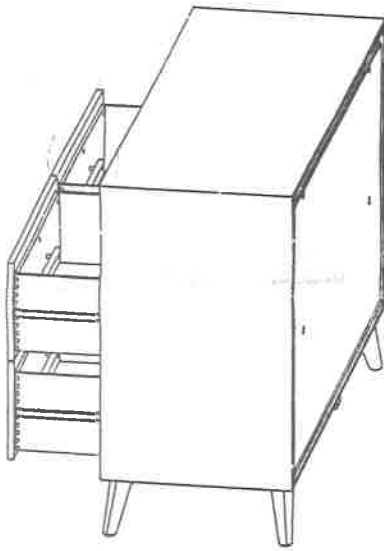
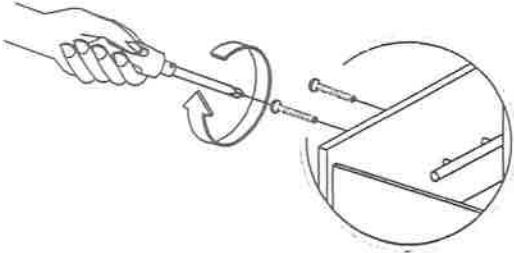


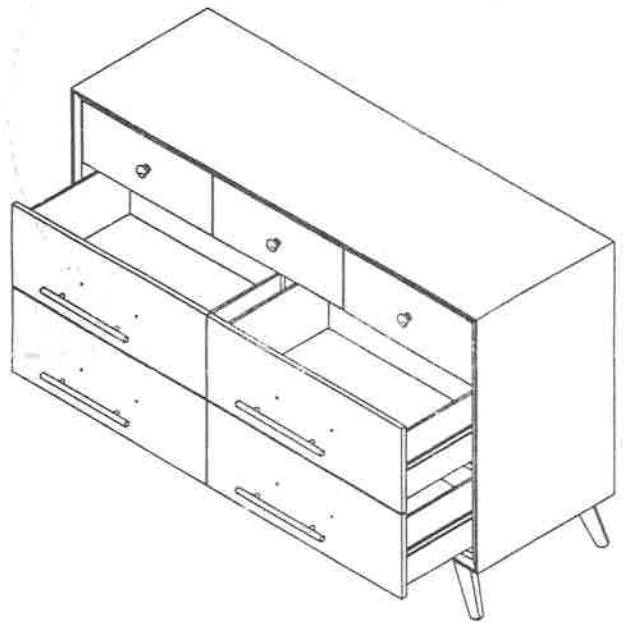
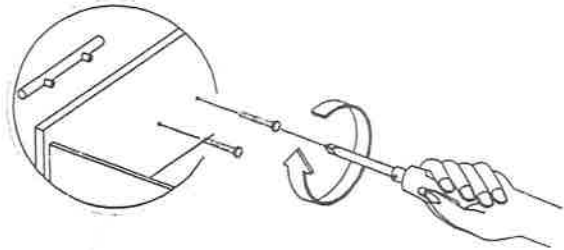
DRESSER
WHITE DRESSER

Assembly Instruction

STEP 1



STEP 2



STEP 3

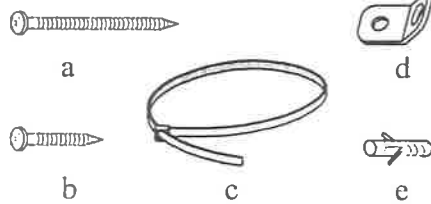


DRESSER

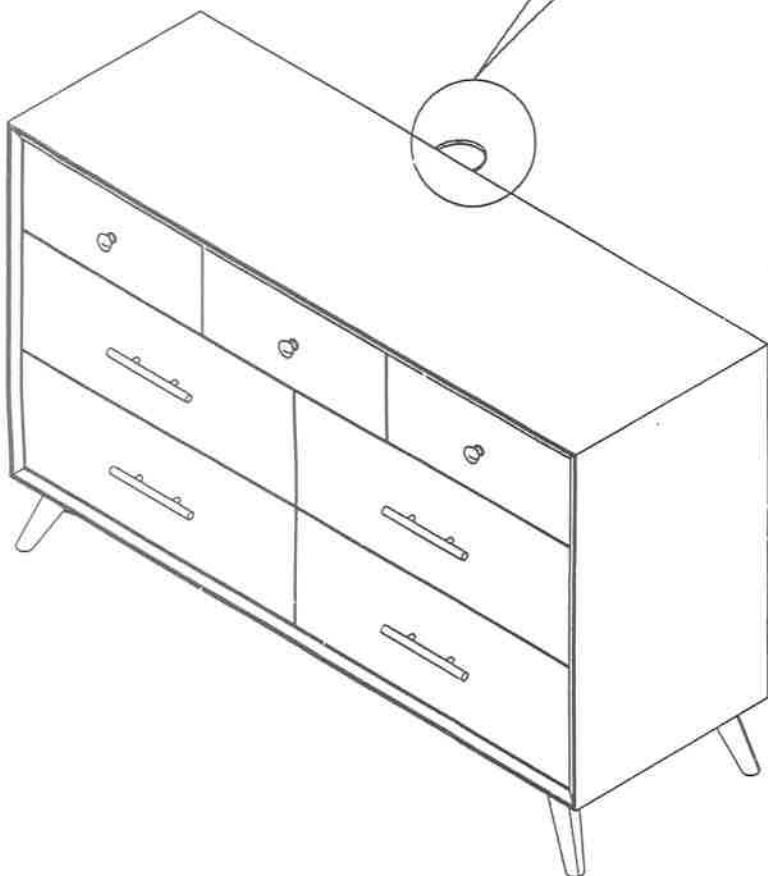
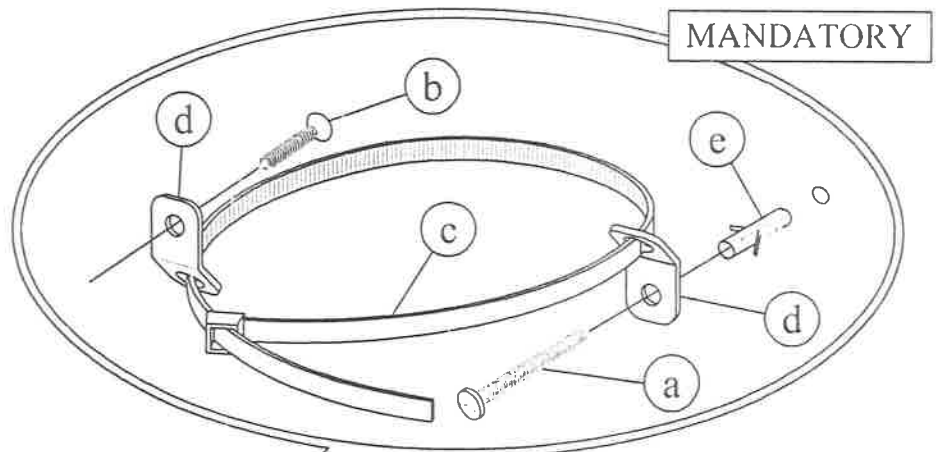
WHITE DRESSER

Assembly Instruction

A . Components :
1. Dresser 1 x



B . Hardware :
a. Screw Long 1 x
b. Screw Short 1 x
c. Restrain Strap 1 x
d. Metal Anchor 2 x
e. Fischer 1 x



⚠ WARNING

Serious or fatal crushing injuries can occur from furniture tipover. To help prevent tipover :

- Install tipover restraint provided.
- Place heaviest items in the lower drawers.
- Unless specifically designed to accommodate, do not set TVs or other heavy objects on top of this product.
- Never allow children to climb or hang on drawers, doors or shelves.
- Never open more than one drawer at a time. (OR)
- Do not defeat or remove the drawer interlock system.

Use of tipover restraints may only reduce, but not eliminate, the risk of tipover.

This is a permanent label. Do not remove.