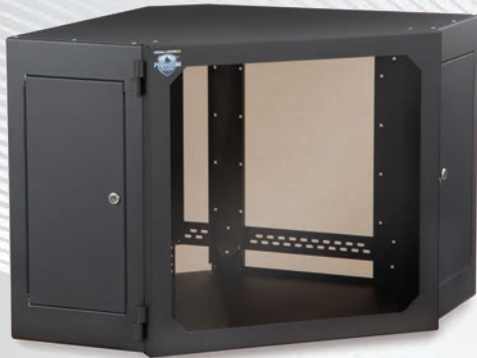


## PHANTOM CLASS® CORNER WALL MOUNT CABINET



- 17.5" usable depth
- 27" actual depth
- Adjustable 10-32 tapped rails
- Smoked acrylic front door
- 650 lb. load capacity
- 19" EIA 310-D compliant
- Made in the USA
- Limited Lifetime Warranty

The Kendall Howard Phantom Class® Corner Wall Mount Cabinet is truly unlike any other rack on the market. It is the first and only EIA compliant wall mounted equipment rack that can mount in the corner of the room. Phantom Class® Corner Wall Mount Cabinet is so innovative with a one-of-the-kind design that we have been awarded a patent for this product. Imagine the ability to mount equipment in schoolrooms, offices or utility rooms without taking up valuable wall space. Saving space means saving time and money.

### FEATURES

**Space Saving Design** - Geometrically merges itself into the environment, saving space, opening up walkways, and improving the overall flow and footprint of the room.

**Multi-Angle Equipment Monitoring** - Because of its ability to mount in the corner, its sleek design allows your equipment to be monitored from virtually anywhere in the room.

**Easy Installation**- Every installation is different, therefore we have included a brilliantly engineered mounting system that allows the cabinet to be installed by just one person while still maintaining a 650 lb. load capacity.

**Removable Locking Access Panels** - Complement the already user-friendly design by allowing access to the healthy 18" mounting depth for maintenance and changes.

**Reversible Lift-Off Door** - Simple lift-off capability can be left or right mounted for a universal solution that can be tailored to each user's specific needs.

**Open Back Design** - As an added feature, we have created an open back design allowing cables to be easily fed through the wall, terminated, and managed prior to hanging the cabinet.

**Top and Bottom Laser Knockouts** - To top it all off, we have added laser knockouts for fans and conduit in the top and bottom panels making it a breeze to configure for any application or environment.

Part Number	1915-3-700-12	UPC	879447002256
Width	27.18"	Color	Black Powder Coated Finish
Depth	27.18"	Warranty	Limited Lifetime Warranty
Height	22.5"	Shipping Method	FedEx Ground