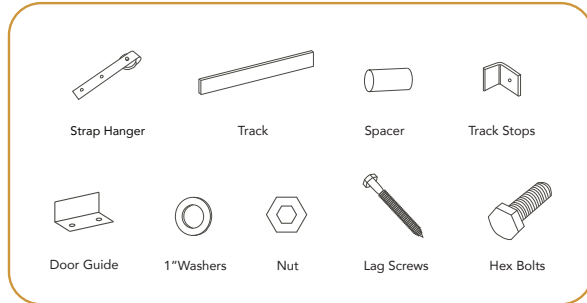


NW ARTISAN HARDWARE  
801-698-2641  
info@artisanhardware.com  
www.artisanhardware.com/barn-door-installation

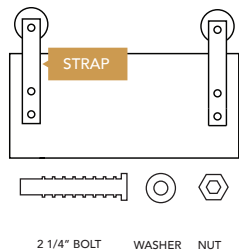


## SLIDING DOOR INSTALLATION GUIDE



### TOOLS NEEDED

- Tape Measure
- Pencil
- Drill with 1/4" bits & 3/8" bits, 1" spade bit, & Philips drill bit
- Short Level
- Ratchet with 9/16" & 5/8" sockets
- 9/16" & 5/8" open end and ratcheting wrench



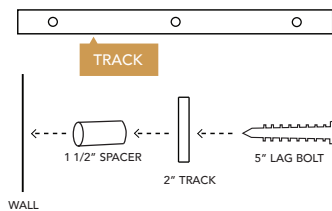
### DOOR AND HANGER

The standard set of hardware works with doors of 1 1/4"-2" thickness.

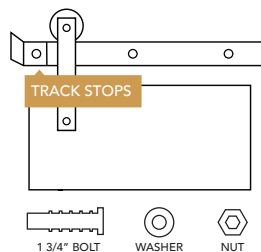
1. Place hanger on the top and front of the door. Insert 2 1/2" placeholder into the groove (use cardboard from box).
2. Position hanger desired distance from edge of door (we recommend 2" from side of door or centered in stile)
3. Place a square to the hanger, and mark the holes.
4. Remove strap, drill a 3/8" clearance hole through the door on the markings previously made.
5. Remove wood debris from door, and place the hanger over the mounting holes.
6. Insert 2 1/4" x 3/8" hex bolts through the strap and door, and loosely attach the washer and nuts.
7. Place a square to the hanger again, and tighten the nuts.

### TRACK

\*The location of the track is determined by the height of your door.



1. To locate the position of the mounting holes use the following formula.  
 $1/2" + (\text{Door Height}) + 1 1/2" = \text{Distance from floor track to mounting hole}$
2. PRE-DRILLED TRACK - Hold the track at the previous measurement and mark locations of holes.
3. NO HOLES IN TRACK - At the measured height locate the position of the studs and make a mark. Hold the track above the opening as if installed, and mark the track at the same locations as the studs in the wall.  
-With a 3/8" drill bit, drill into the track at the markings, including holes on each end for stops if needed.
4. Drill a 1/4" pilot hole at each marking in the wall.
5. With the holes drilled, hold the track up at the determined height, and place the 1 1/2" spacer between the track and the wall.
6. Use level to check track position. The track needs to be centered and level.
7. Using a socket (powered or manual) place the lag through the track and spacer, and tighten into the wall.  
Note: it may be helpful to leave some slack in tightening until all lags are into the wall. Once all are loosely hung, you may go back and tighten them all the way.

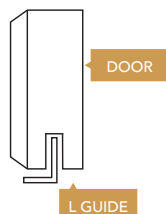


### TRACK STOPS

\*NOTE - The stops are usually placed on each end of the track. However, they can be placed anywhere along the track if you are trying to stop the door at a different location than the tracks end.

1. If needed, drill a 3/8" hole into the track at desired location to ensure door opens fully.
2. Select the 1 3/4" tap bolts, and place them through the stop and then the track, use washer and nut to tighten. (You may also use a lag and spacer if the hole location lines up with a stud or if you are going into backing).
3. The stop can be twisted 180° along the line of the track to either stop the door earlier or later.

### GUIDE



1. The bottom door guide includes 1 L shaped piece of angled steel. (If U Guide or Wall Guide ordered, see website)
2. For optimal result, cut a 1/4" groove along the bottom of the door.
3. Place the guide on the floor with the door closed, it should be on the same side to which the door will slide.
4. Screw the bottom guide into the floor. The guide should be touching the door when the door is fully closed, as the door slides to the side, the guide needs to be in contact with part of the door at all times.

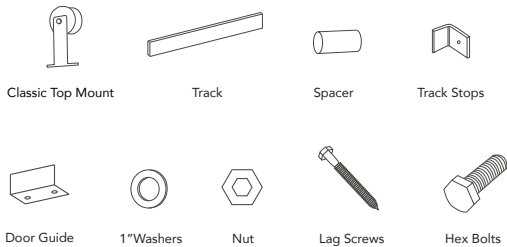
\*NOTE: Screws for bottom guide not included. Select depending on floor material, tile, wood, carpet, etc.

MADE IN THE U.S.A

NW ARTISAN HARDWARE  
801-698-2641  
info@artisanhardware.com  
www.artisanhardware.com/barn-door-installation

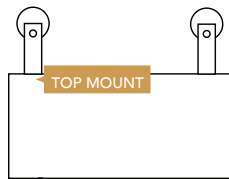


## SLIDING DOOR INSTALLATION GUIDE



### TOOLS NEEDED

- Tape Measure
- Pencil
- Drill with 1/4" bits & 3/8" bits, 1" spade bit, & Philips drill bit
- Short Level
- Ratchet with 9/16" & 5/8" sockets
- 9/16" & 5/8" open end and ratcheting wrench



### DOOR AND HANGER

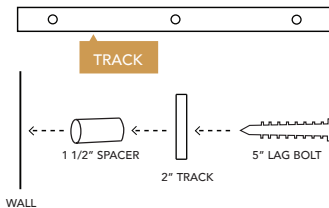
The standard set of hardware works with doors of 1 1/4"-2" thickness.

\*CUSTOMER PROVIDES SCREWS (there is no universal screw as doors vary in weight, material, size, and species).

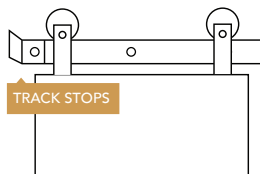
- In most cases a 3-4" wood screw is sufficient. Contact us with questions on your door and appropriate screws.
- 1. Place hanger on the top of the door, the bolts facing the front of the door.
- 2. Position hanger desired distance from edge of door (we recommend 2" from side of door or centered in stile)
- 3. Ensure the hanger is also centered between front and back of door or make the face of the hanger flush with door.
- 4. Use a drill to screw in the 4 holes of each hanger.
- 5. Remove wood debris from door, and place the hanger over the mounting holes.

### TRACK

\*The location of the track is determined by the height of your door.



- To locate the position of the mounting holes use the following formula.  
 $1/2" + (\text{Door Height}) + 1 1/2" = \text{Distance from floor track to mounting hole}$
- PRE-DRILLED TRACK - Hold the track at the previous measurement and mark locations of holes.
- NO HOLES IN TRACK - At the measured height locate the position of the studs and make a mark. Hold the track above the opening as if installed, and mark the track at the same locations as the studs in the wall.  
-With a 3/8" drill bit, drill into the track at the markings, including holes on each end for stops if needed.
- Drill a 1/4" pilot hole at each marking in the wall.
- With the holes drilled, hold the track up at the determined height, and place the 1 1/2" spacer between the track and the wall.
- Use level to check track position. The track needs to be centered and level.
- Using a socket (powered or manual) place the lag through the track and spacer, and tighten into the wall.  
Note: it may be helpful to leave some slack in tightening until all lags are into the wall. Once all are loosely hung, you may go back and tighten them all the way.



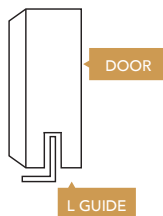
### TRACK STOPS

\*NOTE - The stops are usually placed on each end of the track. However, they can be placed anywhere along the track if you are trying to stop the door at a different location than the tracks end .

- If needed, drill a 3/8" hole into the track at desired location to ensure door opens fully.
- Select the 1 3/4" tap bolts, and place them through the stop and then the track, use washer and nut to tighten. (You may also use a lag and spacer if the hole location lines up with a stud or if you are going into backing).
- The stop can be twisted 180° along the line of the track to either stop the door earlier or later.



### GUIDE



- The bottom door guide includes 1 L shaped piece of angled steel. (If U Guide or Wall Guide ordered, see website)
- For optimal result, cut a 1/4" groove along the bottom of the door.
- Place the guide on the floor with the door closed, it should be on the same side to which the door will slide.
- Screw the bottom guide into the floor. The guide should be touching the door when the door is fully closed, as the door slides to the side, the guide needs to be in contact with part of the door at all times.

\*NOTE: Screws for bottom guide not included. Select depending on floor material, tile, wood, carpet, etc.

MADE IN THE U.S.A