



product code **BSL40**

This 40 Inch model comes with a reinforced Acrylic sink, Marine Veneer Constructed Console that is fully moisture and water proof, with high quality European Bellucci Hardware, that provide smooth soft-closing operation drawers.

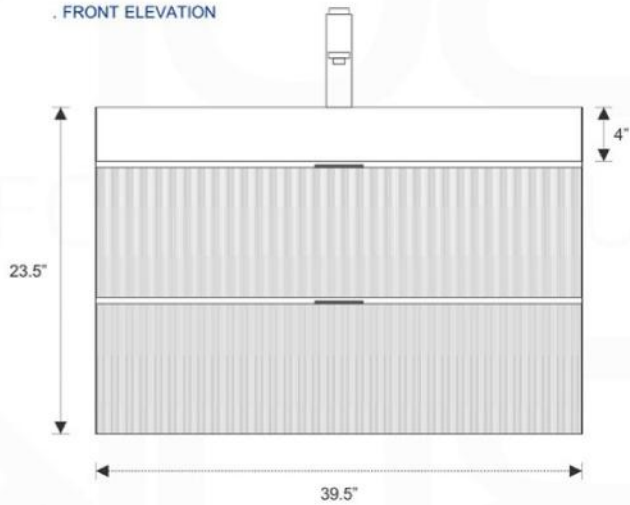
Description:

- Bliss 40" Wall Mounted Vanity w/ two Soft Closing Drawers

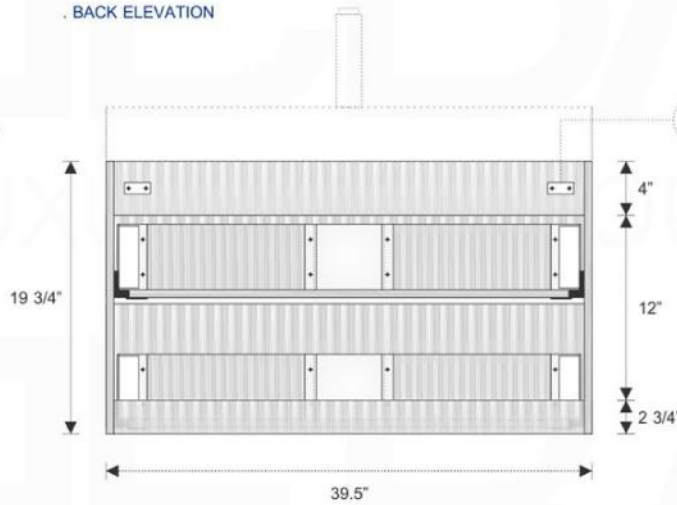
Features:

- European Soft Closing Hardware
- White color: 18mm Thick MDO Construction Console
- Other colors: 18mm Marine Veneer Wood construction Console
- Open back, w/ 3.5" clearance behind drawers for easy plumbing access
- Reinforced Acrylic Composite Sink w/ Rectangular, Chrome Overflow

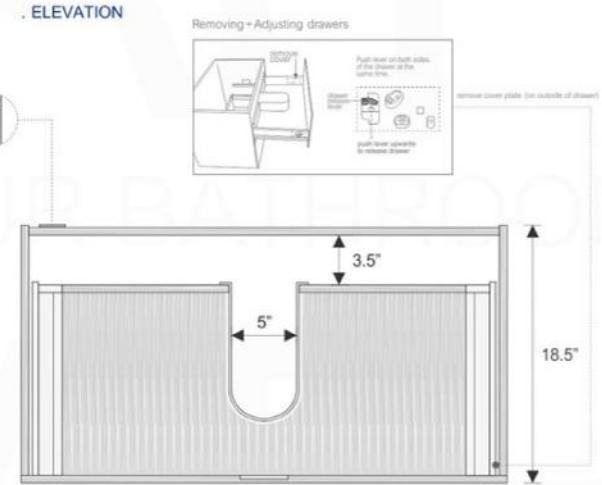
FRONT ELEVATION



BACK ELEVATION



ELEVATION



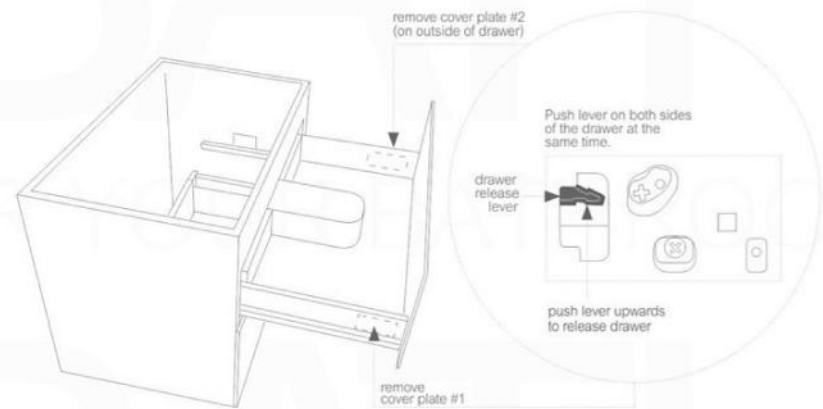
Dimensions:	width	depth	height
inches	39.5"	18.50"	23.5"
mm	1000.00	475.00	600.00

All rights reserved. The authors retain all copyrights in any text, graphic images and photos in this book. No part of this publication may be reproduced or transmitted in any form or by any means, electronic or mechanical, including photocopying, recording, or any information storage and retrieval system, without permission in writing from the authors.

Vanity cabinet | removing+adjustment drawers

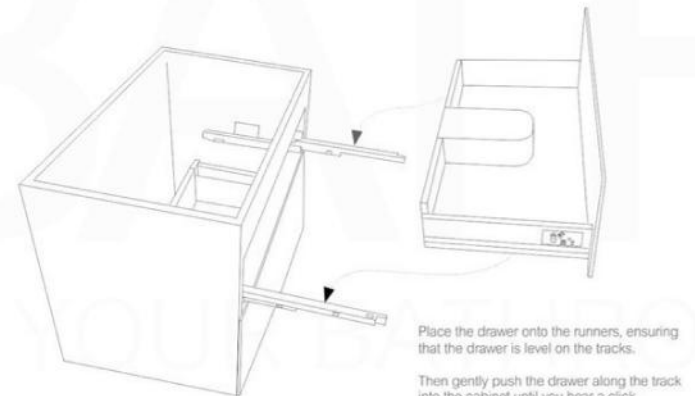
To remove the drawer/s

- * Extend the drawer
- * Each drawer has a **plastic cover plate** on each side of the drawer (#1 and #2)
- * **Remove both cover plates** (#1 and #2) to expose a small **drawer release lever** under each plate: *see detail*
- * To release and remove the drawer, simultaneously **push the drawer release levers upwards** (both sides at same time) and slide/lift the drawer away from the tracks. Repeat for each drawer.



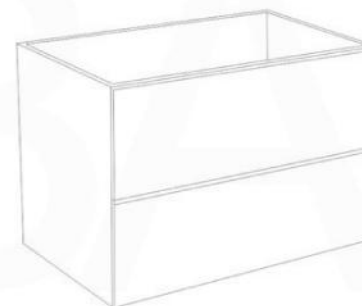
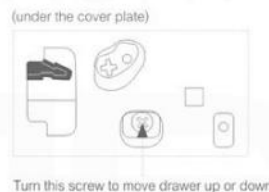
To replace the drawer/s

- * Fully extend the drawer runner on each side of the cabinet.
- * Place the drawer onto the runners, ensuring that the drawer is level on the tracks, and continue to hold in place (otherwise the drawer will fall).
- * Keeping the drawer level, gently push the drawer along the runners into the cabinet until you hear a click. This indicates that the drawer is properly locked into place on the track.
- * Once the drawer is back in place, replace the cover plates on the sides of the drawer.



To adjust the drawer/s

- * To move the drawer up or down, turn the **bottom screw** located under the cover plate on each side of the drawer.



These instructions show a vanity cabinet which has two drawers. However, the instructions apply to all cabinets and all sizes of the Bliss Vanity line. The characteristics and drawer mechanisms are the **same** for all units.