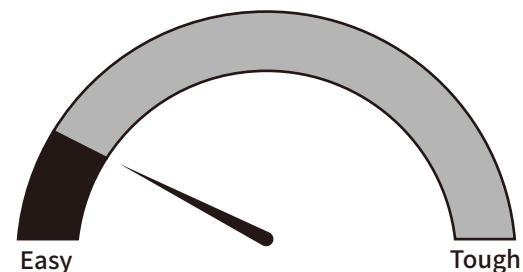


THIS INSTRUCTION BOOKLET CONTAINS **IMPORTANT** SAFETY INFORMATION. PLEASE READ AND KEEP FOR FUTURE REFERENCE.



## **WARNING**

- Unit can tip over causing severe injury or death.
- Anchor unit to stud in wall (if instructed to).
- Do Not allow children to climb on unit.
- Put heavy items on lower shelves or drawers.

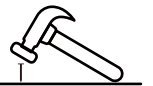
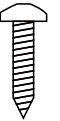


Assembly Difficulty Meter

# Helpful Hints

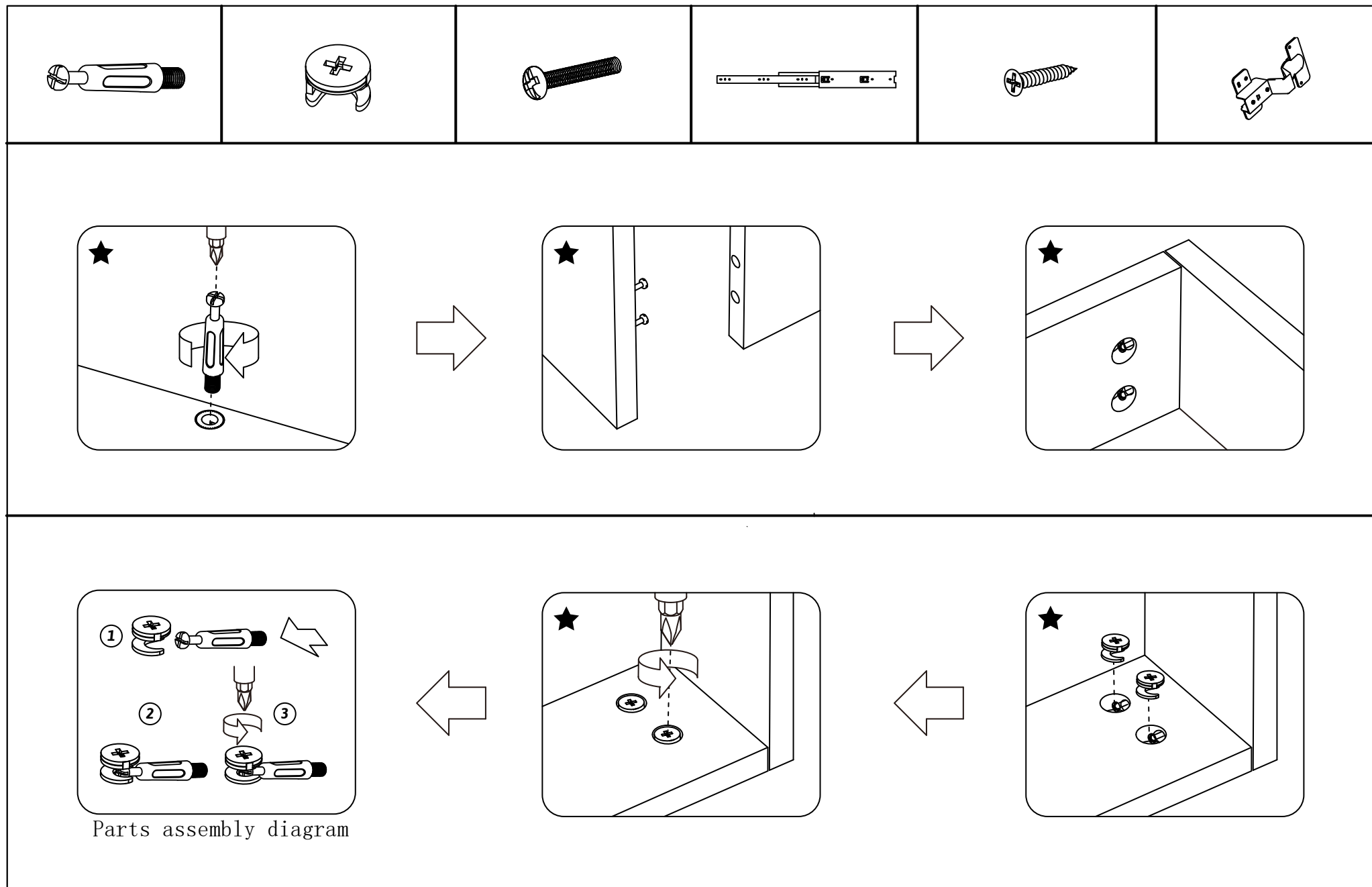
PEOPLE NEEDED FOR ASSEMBLY: 1 - 2  
ESTIMATED ASSEMBLY TIME: 1 HOUR

- Open your item in the area you plan to keep it to avoid excessive heavy lifting.
- Identify, sort and count the parts before attempting assembly.
- Compression dowels are lightly tapped in with a hammer.
- Slides are labeled with a R (right) and L (left) for proper placement.
- Make sure to always face the point on the top of the Cam Lock towards the outer edge.
- Use all the nails provided for the back panel and spread them out equally.
- Back panel must be used to make sure your unit is sturdy.
- Do NOT use harsh chemicals or abrasive cleaners on this item.
- Never push, pull, or drag your furniture.



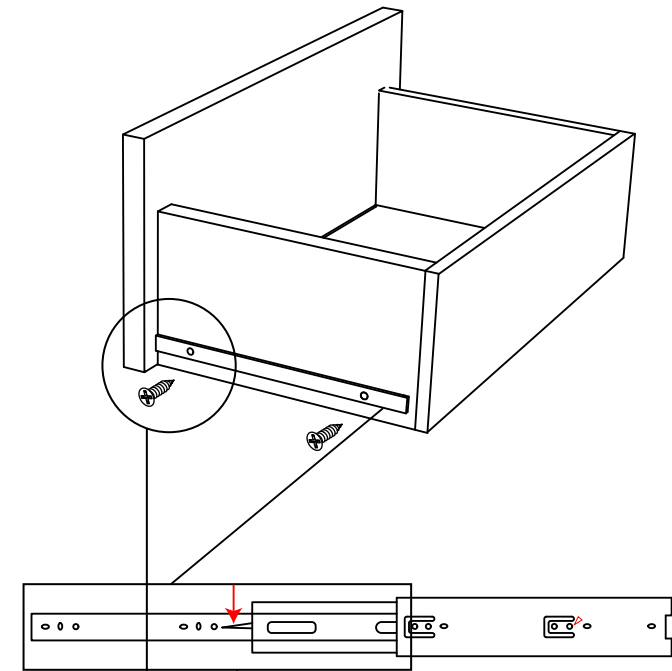
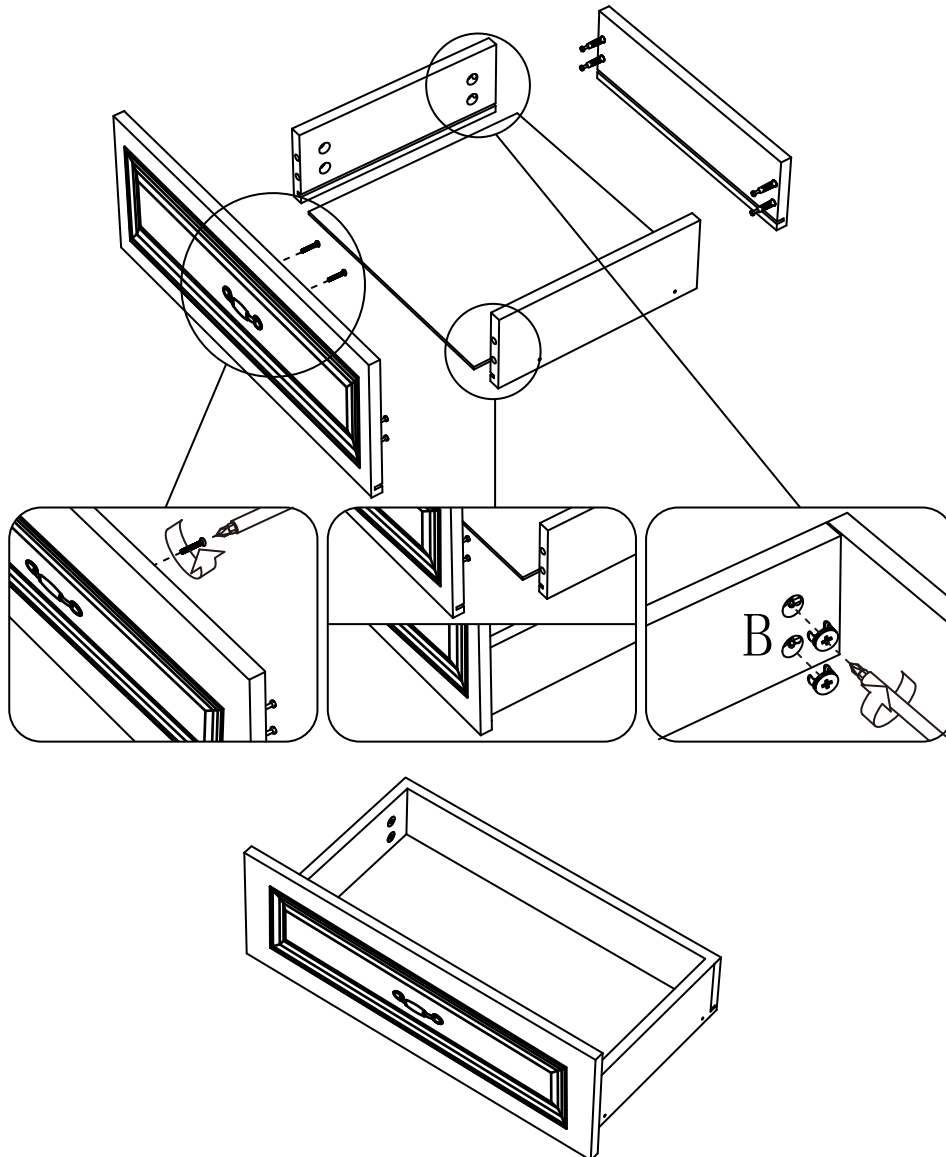
# Before You Start

- ✓ — Installation is very difficult, please two people to install
- ✓ — Read through each step carefully and follow the proper order
- ✓ — Separate and count all your parts and hardware
- ✓ — Give yourself enough room for the assembly process
- ✓ — Have the following tools: Hammer
- ✓ — Caution: If using a power drill or power screwdriver for screwing, please be aware to slow down and stop when screw is tight. Failure to do so may result in stripping the screw.

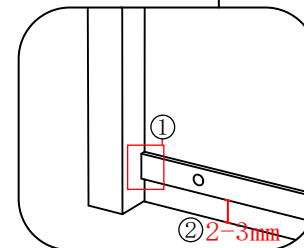


★ All asterisks follow the installation process above

First install the drawer .

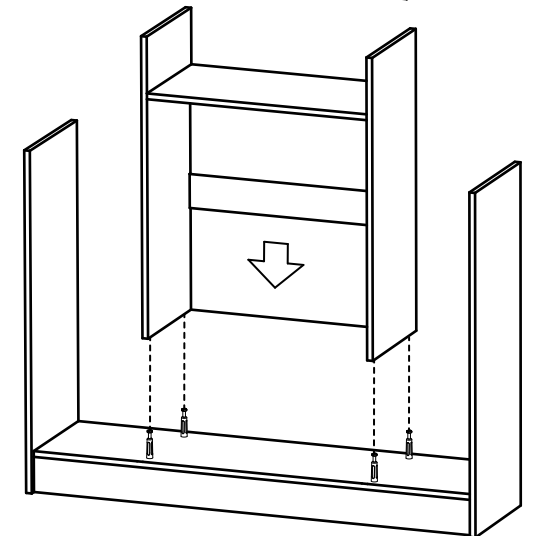
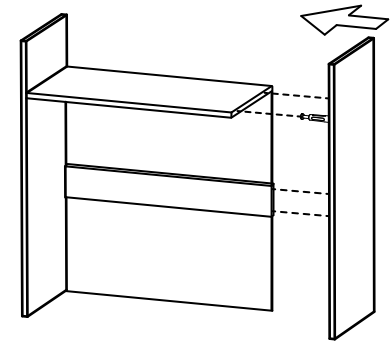
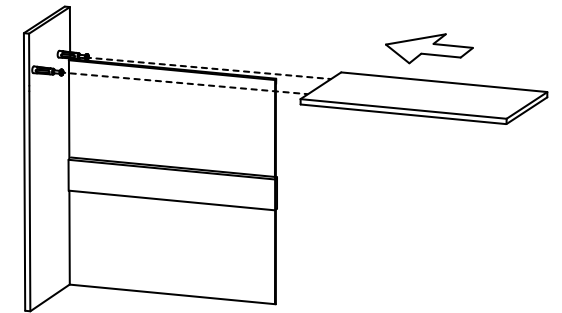
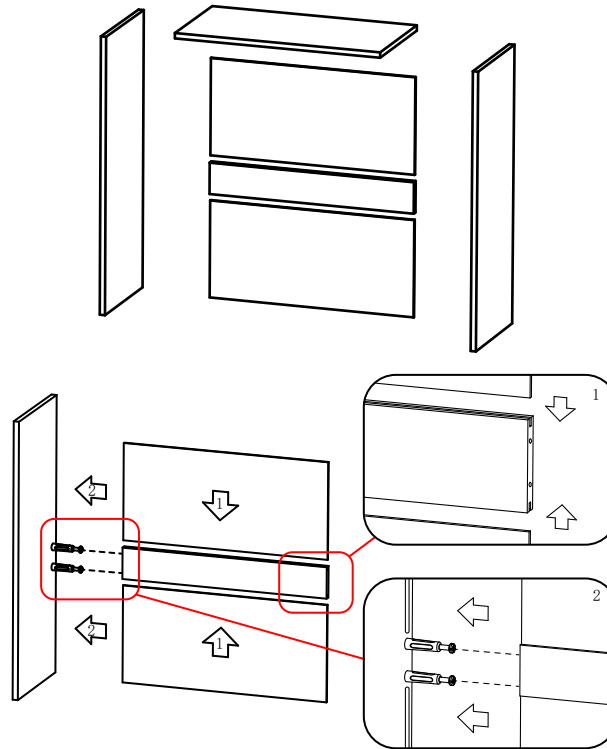
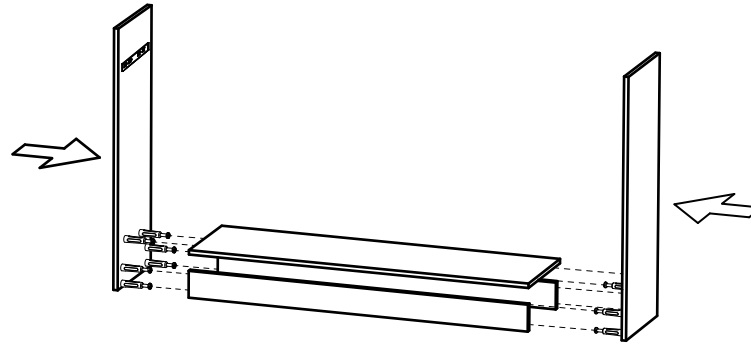
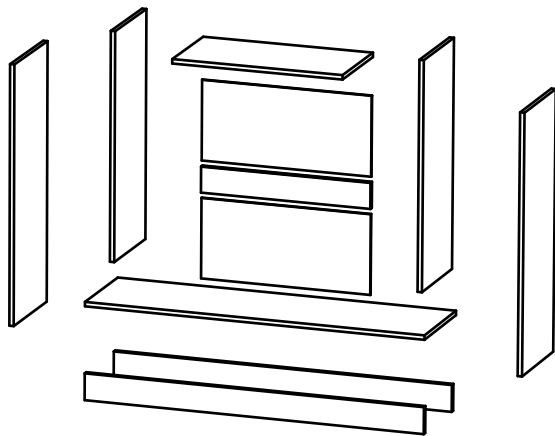
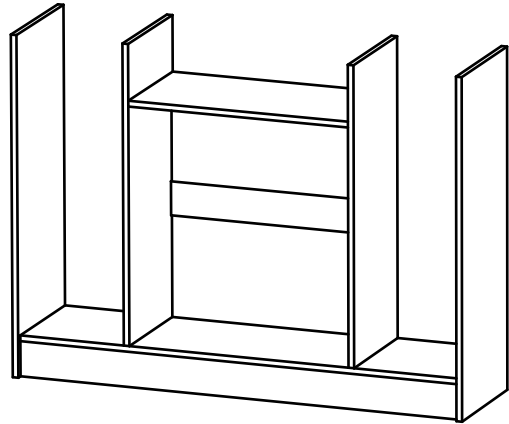


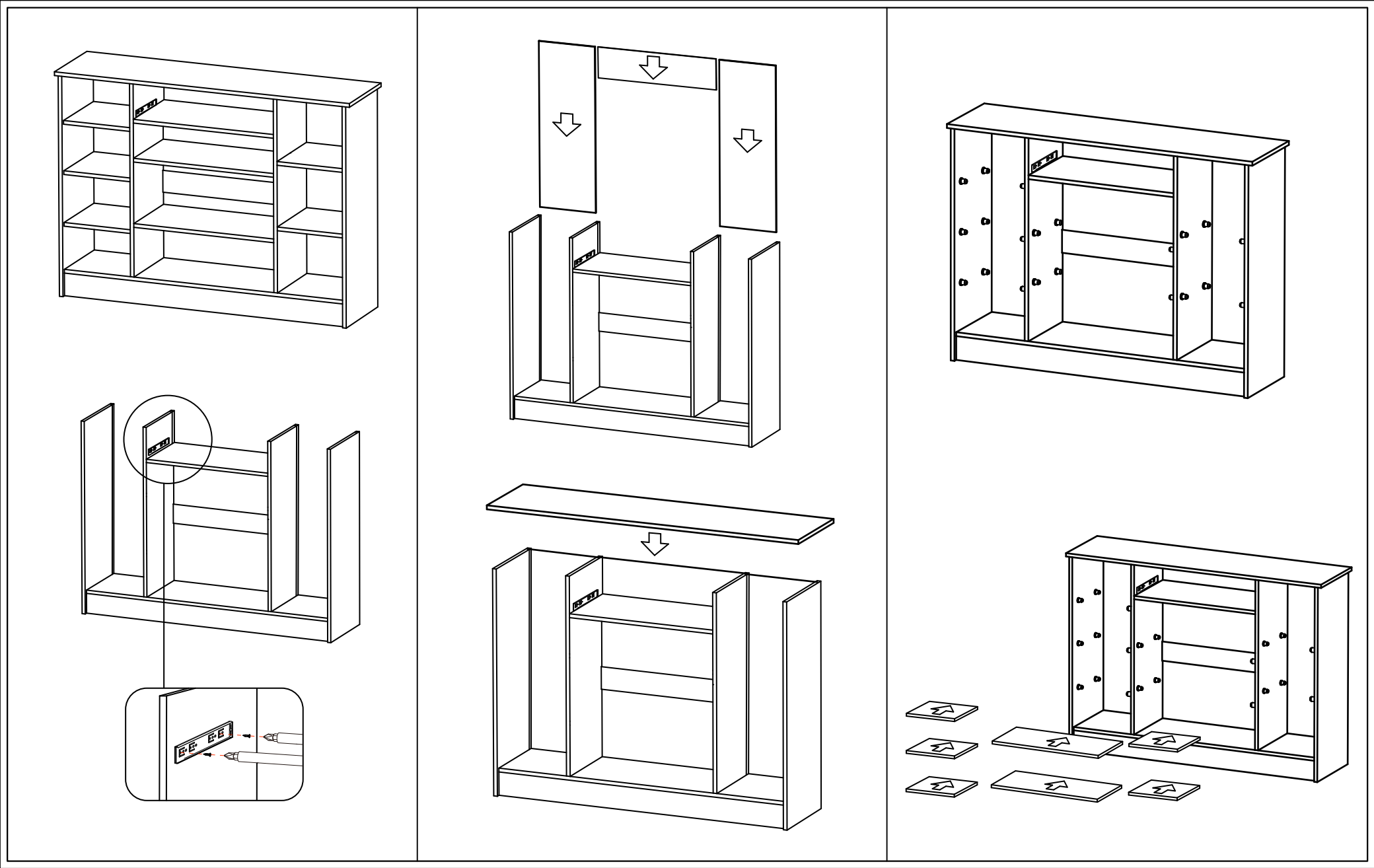
Precautions: When installing the drawer slide, Need to split the slide rail into two parts, D1 and D2. Look at the arrow direction and press down to pull out the slide rail

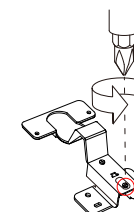
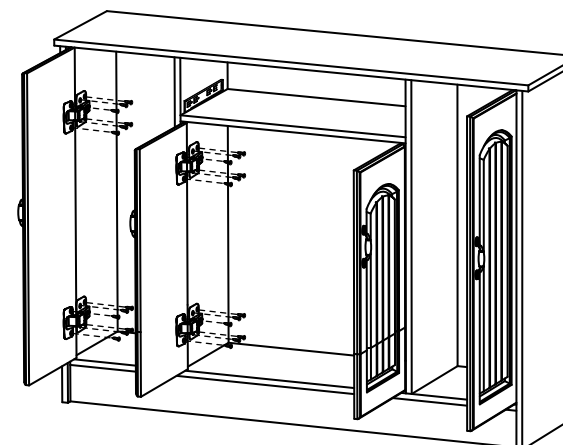
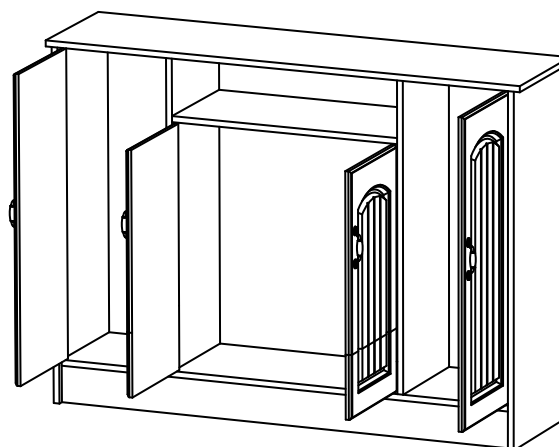
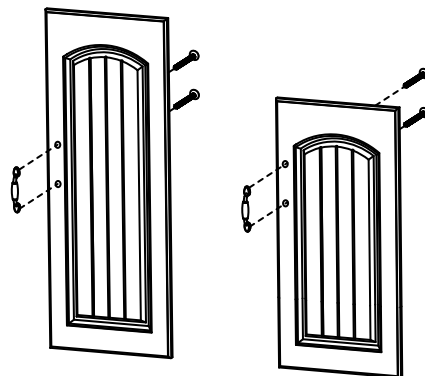
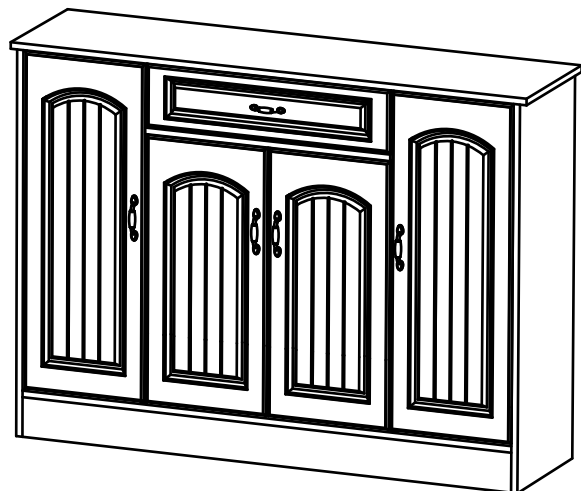


- ① Please fit the slide rail to the 21board, and don't leave gaps.
- ② When installing the slide rail, reserve a distance of 2-3mm from the bottom of the 22board.

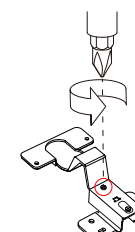
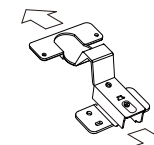
Second install the cabinet.







The hinge can be loosened with a screwdriver to control the gap of the door



The hinge can be loosened with a screwdriver to control the distance between the door and the side plank



# 5 Star Rating



Visit your local retailer's website, rate your purchased product and leave us some feedback!