

# Instruction Manual

## Eiffel Tower Lamp

### **IMPORTANT SAFETY INSTRUCTIONS:**

This portable lamp has a polarized plug (one blade is wider than the other). As a safety feature to reduce the risk of electrical shock and fire, this plug will fit in a polarized outlet only one way. If the plug does not fit fully in the outlet, reverse the plug. If it still does not fit, contact a qualified electrician. Never use with an extension cord unless the plug can be fully inserted. Do not alter this safety feature.

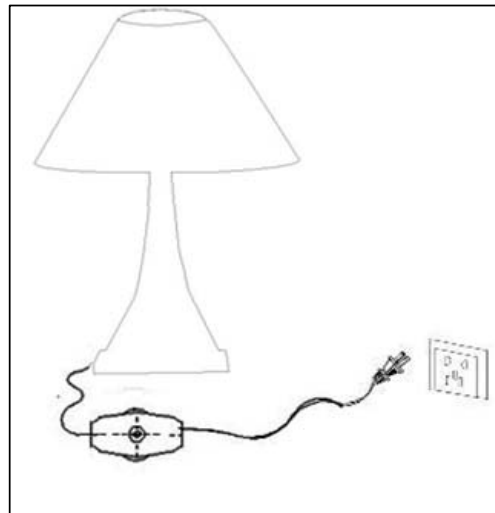
This lamp is for indoor use only. The lamp should not be used near water. Never immerse the lamp in water or other liquids. Never cover the lamp with any object including cloth or paper as this is a fire hazard. Do not handle the bulb immediately after the light is turned off as it will be hot. This is not a toy.

### **ASSEMBLY INSTRUCTIONS:**

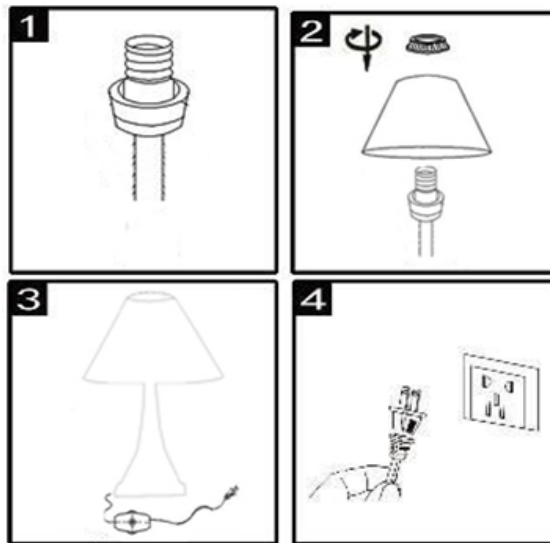
1. Unscrew the socket nut and remove the lamp shade. Remove the protective packaging. Return the lamp shade to the body and secure with socket nut.
2. Install bulb. Only use bulb of specified type and maximum rated wattage or less.
3. Assembly is complete.
4. Plug the electrical supply cord into the wall outlet. Use the rotary switch located on the cord to turn the lamp on/off.

### **CLEANING & MAINTENANCE:**

1. Unplug the fixture before cleaning.
2. Use a clean, dry, lint-free cloth.
3. Do not use water or other chemical cleaning agents.



Requires 1 x 60W Medium Base Type A bulb



LIMITED WARRANTY

---